

## DATASHEET

# Beta-B2 crystallin Rabbit Polyclonal Antibody

CAT. NO. APA15380

### KEY FEATURES

|               |   |               |              |
|---------------|---|---------------|--------------|
| Target        | Beta-B2 crystallin  | Source / Host | Rabbit       |
| Reactivity    | Human, Mouse, Rat   | Clonality     | Polyclonal   |
| Applications  | WB  | Conjugation   | Unconjugated |
| Form / Buffer | Liquid in 0.42% Potassium phosphate, 0.87% Sodium chloride, pH 7.3, 30% glycerol, and 0.01% sodium azide. | Storage       | at-20°C      |

### BACKGROUND

Crystallins are the dominant structural components of the vertebrate eye lens.

### APPLICATION

To ensure optimal assay performance, AREX recommends conducting reagent titration tailored to each testing system for optimal detection results.

|    |                |
|----|----------------|
| WB | 1:500 - 1:2000 |
|----|----------------|

\*Results are sample-specific. Please refer to your local assay conditions and test parameters for reference.

### PRODUCT OVERVIEW

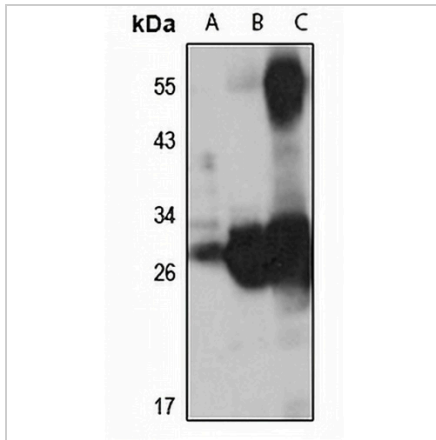
|                   |   |
|-------------------|---|
| Description       | Rabbit polyclonal antibody to Beta-B2 crystallin  |
| Specificity       | Recognizes endogenous levels of Beta-B2 crystallin protein  |
| Antibody Type     | Primary antibody  |
| Immunogen         | Recombinant fusion protein of human Beta-B2 crystallin. The exact sequence is proprietary.                |
| Purification      | The antibody was purified by immunogen affinity chromatography.   |
| Molecular Weight  | Predicted: 23 kD; Observed: 27 kD   |
| Form/Buffer       | Liquid in 0.42% Potassium phosphate, 0.87% Sodium chloride, pH 7.3, 30% glycerol, and 0.01% sodium azide. |
| Alternative Names | CRYB2; CRYB2A; Beta-crystallin B2; Beta-B2 crystallin; Beta-crystallin Bp                                 |
| Gene Symbol       | CRYBB2  |
| Entrez Gene       | 1415(Human); 12961(Mouse); 25422(Rat)   |
| SwissProt         | P43320(Human); P62696(Mouse); P62697(Rat)   |

\*AREX continuously optimizes our products. Webpage content may not reflect the latest updates. For inquiries, please contact [info@arexbio.com](mailto:info@arexbio.com) or your local distributor.

\*Clone Number, Reactivity, Source/Host and Clonality can be found in the product name and Key Features section above.

**DATASHEET****Beta-B2 crystallin Rabbit Polyclonal Antibody**

CAT. NO. APA15380

**DATA**

Western blot analysis of Beta-B2 crystallin expression in HeLa (A), mouse eye (B), rat eye (C) whole cell lysates. (Predicted band size: 23 kD; Observed band size: 27 kD)

**STORAGE**

Store at 4°C short term. For long term storage, store at -20°C, avoiding freeze/thaw cycles.

**NOTE**

For Research Use Only. Not for diagnostic, therapeutics, prophylactic or in vivo use.