

DATASHEET

Gamma-D crystallin Rabbit Polyclonal Antibody

CAT. NO. APA15381

KEY FEATURES

Target	Gamma-D crystallin	Source / Host	Rabbit
Reactivity	Human, Mouse, Rat	Clonality	Polyclonal
Applications	WB	Conjugation	Unconjugated
Form / Buffer	Liquid in 0.42% Potassium phosphate, 0.87% Sodium chloride, pH 7.3, 30% glycerol, and 0.01% sodium azide.		Storage at -20°C

BACKGROUND

Crystallins are the dominant structural components of the vertebrate eye lens.

APPLICATION

To ensure optimal assay performance, AREX recommends conducting reagent titration tailored to each testing system for optimal detection results.

WB	1:500 - 1:2000
----	----------------

*Results are sample-specific. Please refer to your local assay conditions and test parameters for reference.

PRODUCT OVERVIEW

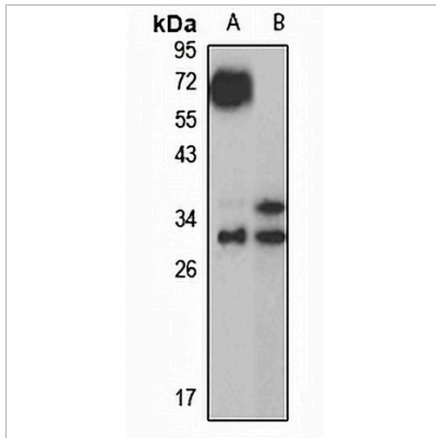
Description	Rabbit polyclonal antibody to Gamma-D crystallin
Specificity	Recognizes endogenous levels of Gamma-D crystallin protein
Antibody Type	Primary antibody
Immunogen	Recombinant fusion protein of human Gamma-D crystallin. The exact sequence is proprietary.
Purification	The antibody was purified by immunogen affinity chromatography.
Molecular Weight	Predicted: 20 kD; Observed: 30 kD
Form/Buffer	Liquid in 0.42% Potassium phosphate, 0.87% Sodium chloride, pH 7.3, 30% glycerol, and 0.01% sodium azide.
Alternative Names	CRYG4; Gamma-crystallin D; Gamma-D-crystallin; Gamma-crystallin 4
Gene Symbol	CRYGD
Entrez Gene	1421(Human); 12967(Mouse); 24278(Rat)
SwissProt	P07320(Human); P04342(Mouse); P10067(Rat)

*AREX continuously optimizes our products. Webpage content may not reflect the latest updates. For inquiries, please contact info@arexbio.com or your local distributor.

*Clone Number, Reactivity, Source/Host and Clonality can be found in the product name and Key Features section above.

DATASHEET**Gamma-D crystallin Rabbit Polyclonal Antibody**

CAT. NO. APA15381

DATA

Western blot analysis of Gamma-D crystallin expression in HepG2 (A), mouse liver (B) whole cell lysates. (Predicted band size: 20 kD; Observed band size: 30 kD)

STORAGE

Store at 4°C short term. For long term storage, store at -20°C, avoiding freeze/thaw cycles.

NOTE

For Research Use Only. Not for diagnostic, therapeutics, prophylactic or in vivo use.