

**DATASHEET**

**Zeta crystallin Rabbit Polyclonal Antibody**

CAT. NO. APA15382

**KEY FEATURES**

Target	Zeta crystallin	Source / Host	Rabbit
Reactivity	Human, Mouse, Rat	Clonality	Polyclonal
Applications	WB, IF/ICC	Conjugation	Unconjugated
Form / Buffer	Liquid in 0.42% Potassium phosphate, 0.87% Sodium chloride, pH 7.3, 30% glycerol, and 0.01% sodium azide.		Storage at -20°C

**BACKGROUND**

Multifunctional crystallin endowed with unrelated mRNA stabilization and enzymatic oxidoreductase activities . Binds (AU)-rich elements (ARE) in the 3'-UTR of target mRNA to enhance their stability . Upon metabolic acidosis, stabilizes the mRNA encoding SLC12A1 a cotransporter involved in transepithelial NH4(+) reabsorption in the medullary thick ascending limb in kidney . In response to acidosis, also participates to the adaptive increase in renal ammoniogenesis by stabilizing the mRNAs of enzymes involved in glutamine catabolism . By the same mechanism, it also regulates the expression of the antiapoptotic protein BCL2 .

**APPLICATION**

To ensure optimal assay performance, AREX recommends conducting reagent titration tailored to each testing system for optimal detection results.

WB	1:500 - 1:2000
IF/ICC	1:50 - 1:200

\*Results are sample-specific. Please refer to your local assay conditions and test parameters for reference.

**PRODUCT OVERVIEW**

Description	Rabbit polyclonal antibody to Zeta crystallin
Specificity	Recognizes endogenous levels of Zeta crystallin protein
Antibody Type	Primary antibody
Immunogen	Recombinant fusion protein of human Zeta crystallin. The exact sequence is proprietary.
Purification	The antibody was purified by immunogen affinity chromatography.
Molecular Weight	Predicted: 20; Observed: 37 kD
Form/Buffer	Liquid in 0.42% Potassium phosphate, 0.87% Sodium chloride, pH 7.3, 30% glycerol, and 0.01% sodium azide.
Alternative Names	Quinone oxidoreductase; NADPH:quinone reductase; Zeta-crystallin
Gene Symbol	CRYZ
Entrez Gene	1429(Human); 12972(Mouse); 362061(Rat)
SwissProt	Q08257(Human); P47199(Mouse); Q6AYT0(Rat)

\*AREX continuously optimizes our products. Webpage content may not reflect the latest updates. For inquiries, please contact [info@arexbio.com](mailto:info@arexbio.com) or your local distributor.

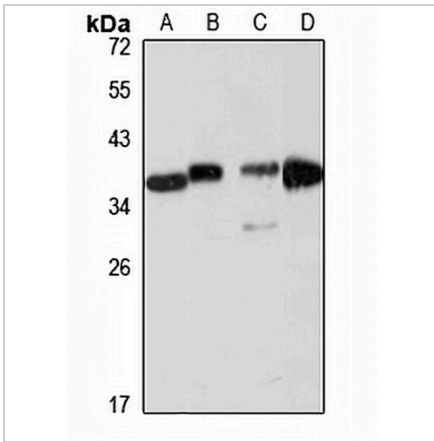
\*Clone Number, Reactivity, Source/Host and Clonality can be found in the product name and Key Features section above.

**DATASHEET**

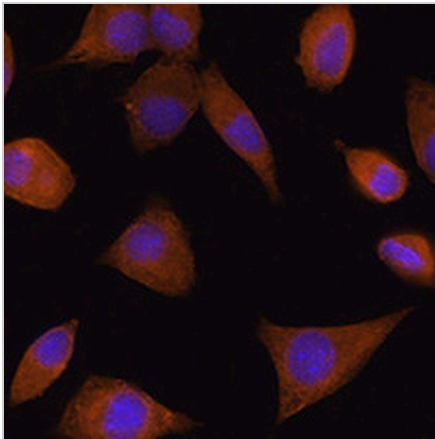
**Zeta crystallin Rabbit Polyclonal Antibody**

CAT. NO. APA15382

**DATA**



Western blot analysis of Zeta crystallin expression in K562 (A), mouse liver (B), mouse brain (C), rat kidney (D) whole cell lysates. (Predicted band size: 20; 31; 35 kD; Observed band size: 37 kD)



Immunofluorescent analysis of Zeta crystallin staining in L929 cells. Formalin-fixed cells were permeabilized with 0.1% Triton X-100 in TBS for 5-10 minutes and blocked with 3% BSA-PBS for 30 minutes at room temperature. Cells were probed with the primary antibody in 3% BSA-PBS and incubated overnight at 4 °C in a humidified chamber. Cells were washed with PBST and incubated with a AREX® Fluor 594-conjugated secondary antibody (red) in PBS at room temperature in the dark. DAPI was used to stain the cell nuclei (blue).

**STORAGE**

Store at 4°C short term. For long term storage, store at -20°C, avoiding freeze/thaw cycles.

**NOTE**

For Research Use Only. Not for diagnostic, therapeutics, prophylactic or in vivo use.