

DATASHEET

Placental Lactogen Rabbit Polyclonal Antibody

CAT. NO. APA15384

KEY FEATURES

Target	Placental Lactogen	Source / Host	Rabbit
Reactivity	Human	Clonality	Polyclonal
Applications	WB	Conjugation	Unconjugated
Form / Buffer	Liquid in 0.42% Potassium phosphate, 0.87% Sodium chloride, pH 7.3, 30% glycerol, and 0.01% sodium azide.		Storage at-20°C

BACKGROUND

Produced only during pregnancy and is involved in stimulating lactation, fetal growth and metabolism. Does not interact with GHR but only activates PRLR through zinc-induced dimerization.

APPLICATION

To ensure optimal assay performance, AREX recommends conducting reagent titration tailored to each testing system for optimal detection results.

WB	1:500 - 1:2000
----	----------------

*Results are sample-specific. Please refer to your local assay conditions and test parameters for reference.

PRODUCT OVERVIEW

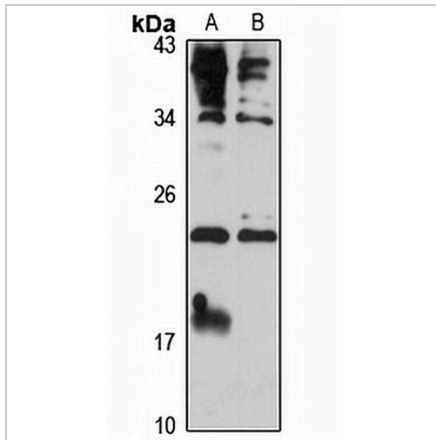
Description	Rabbit polyclonal antibody to Placental Lactogen
Specificity	Recognizes endogenous levels of Placental Lactogen protein
Antibody Type	Primary antibody
Immunogen	Recombinant fusion protein of human Placental Lactogen. The exact sequence is proprietary.
Purification	The antibody was purified by immunogen affinity chromatography.
Molecular Weight	Predicted: 25 kD; Observed: 23 kD
Form/Buffer	Liquid in 0.42% Potassium phosphate, 0.87% Sodium chloride, pH 7.3, 30% glycerol, and 0.01% sodium azide.
Alternative Names	Chorionic somatomammotropin hormone; Choriomammotropin; Lactogen; Placental lactogen; PL
Gene Symbol	CSH1; CSH2
Entrez Gene	1442; 1443(Human)
SwissProt	P01243(Human)

*AREX continuously optimizes our products. Webpage content may not reflect the latest updates. For inquiries, please contact info@arexbio.com or your local distributor.

*Clone Number, Reactivity, Source/Host and Clonality can be found in the product name and Key Features section above.

DATASHEET**Placental Lactogen Rabbit Polyclonal Antibody**

CAT. NO. APA15384

DATA

Western blot analysis of Placental Lactogen expression in HeLa (A), U87MG (B) whole cell lysates. (Predicted band size: 25 kD; Observed band size: 23 kD)

STORAGE

Store at 4°C short term. For long term storage, store at -20°C, avoiding freeze/thaw cycles.

NOTE

For Research Use Only. Not for diagnostic, therapeutics, prophylactic or in vivo use.