

DATASHEET

CTAG1B Rabbit Polyclonal Antibody

CAT. NO. APA15389

KEY FEATURES

Target	CTAG1B	Source / Host	Rabbit
Reactivity	Human	Clonality	Polyclonal
Applications	WB, IHC	Conjugation	Unconjugated
Form / Buffer	Liquid in 0.42% Potassium phosphate, 0.87% Sodium chloride, pH 7.3, 30% glycerol, and 0.01% sodium azide.		Storage at -20°C

BACKGROUND

The protein encoded by this gene is a tumor cell antigen found in various types of cancers, which makes it a good candidate for a cancer vaccine. This gene is also highly expressed in normal ovary and testis tissues. An identical copy of this gene is found on the same chromosome.

APPLICATION

To ensure optimal assay performance, AREX recommends conducting reagent titration tailored to each testing system for optimal detection results.

WB	1:500 - 1:2000
IHC	1:50 - 1:200

*Results are sample-specific. Please refer to your local assay conditions and test parameters for reference.

PRODUCT OVERVIEW

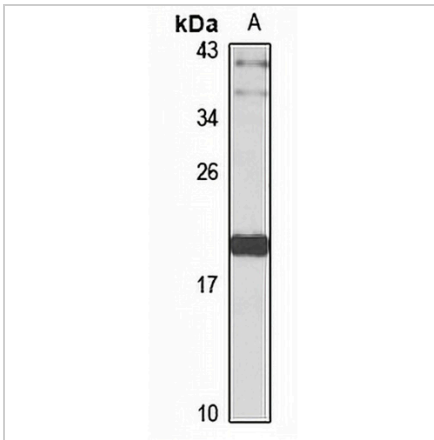
Description	Rabbit polyclonal antibody to CTAG1B
Specificity	Recognizes endogenous levels of CTAG1B protein
Antibody Type	Primary antibody, Tag
Immunogen	Recombinant fusion protein of human CTAG1B. The exact sequence is proprietary.
Purification	The antibody was purified by immunogen affinity chromatography.
Molecular Weight	Predicted: 16; Observed: 20 kD
Form/Buffer	Liquid in 0.42% Potassium phosphate, 0.87% Sodium chloride, pH 7.3, 30% glycerol, and 0.01% sodium azide.
Alternative Names	CTAG; CTAG1; ESO1; LAGE2; LAGE2A; LAGE2B; Cancer/testis antigen 1; Autoimmunogenic cancer/testis antigen NY-ESO-1; Cancer/testis antigen 6.1; CT6.1; L antigen family member 2; LAGE-2
Gene Symbol	CTAG1B
Entrez Gene	1485; 246100(Human)
SwissProt	P78358(Human)

*AREX continuously optimizes our products. Webpage content may not reflect the latest updates. For inquiries, please contact info@arexbio.com or your local distributor.

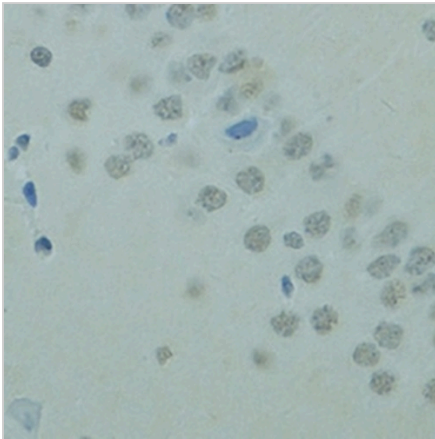
*Clone Number, Reactivity, Source/Host and Clonality can be found in the product name and Key Features section above.

DATASHEET**CTAG1B Rabbit Polyclonal Antibody**

CAT. NO. APA15389

DATA

Western blot analysis of CTAG1B expression in HT1080 (A) whole cell lysates. (Predicted band size: 16; 17 kD; Observed band size: 20 kD)



Immunohistochemical analysis of CTAG1B staining in rat brain formalin fixed paraffin embedded tissue section. The section was pre-treated using heat mediated antigen retrieval with sodium citrate buffer (pH 6.0). The section was then incubated with the antibody at room temperature and detected using an HRP conjugated compact polymer system. DAB was used as the chromogen. The section was then counterstained with haematoxylin and mounted with DPX.

STORAGE

Store at 4°C short term. For long term storage, store at -20°C, avoiding freeze/thaw cycles.

NOTE

For Research Use Only. Not for diagnostic, therapeutics, prophylactic or in vivo use.