

DATASHEET

CTAGE1 Rabbit Polyclonal Antibody

CAT. NO. APA15390

KEY FEATURES

Target	CTAGE1	Source / Host	Rabbit
Reactivity	Human, Mouse, Rat	Clonality	Polyclonal
Applications	WB	Conjugation	Unconjugated
Form / Buffer	Liquid in 0.42% Potassium phosphate, 0.87% Sodium chloride, pH 7.3, 30% glycerol, and 0.01% sodium azide.		Storage at -20°C

BACKGROUND

cTAGE family member 2 (CTAGE1), also known as Cancer/testis antigen 21.2, CT21.2. Belongs to the cTAGE family Subcellular location: Membrane Tissue specificity: Testis. Not found in tumor

APPLICATION

To ensure optimal assay performance, AREX recommends conducting reagent titration tailored to each testing system for optimal detection results.

WB	1:500 - 1:2000
----	----------------

*Results are sample-specific. Please refer to your local assay conditions and test parameters for reference.

PRODUCT OVERVIEW

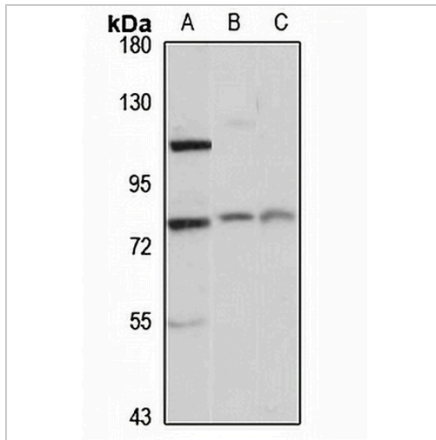
Description	Rabbit polyclonal antibody to CTAGE1
Specificity	Recognizes endogenous levels of CTAGE1 protein
Antibody Type	Primary antibody, Tag
Immunogen	Recombinant fusion protein of human CTAGE1. The exact sequence is proprietary.
Purification	The antibody was purified by immunogen affinity chromatography.
Molecular Weight	Predicted: 8; Observed: 85 kD
Form/Buffer	Liquid in 0.42% Potassium phosphate, 0.87% Sodium chloride, pH 7.3, 30% glycerol, and 0.01% sodium azide.
Alternative Names	CTAGE2; cTAGE family member 2; Protein cTAGE-2; Cancer/testis antigen 21.2; CT21.2
Gene Symbol	CTAGE1
Entrez Gene	64693(Human)
SwissProt	Q96RT6(Human)

*AREX continuously optimizes our products. Webpage content may not reflect the latest updates. For inquiries, please contact info@arexbio.com or your local distributor.

*Clone Number, Reactivity, Source/Host and Clonality can be found in the product name and Key Features section above.

DATASHEET**CTAGE1 Rabbit Polyclonal Antibody**

CAT. NO. APA15390

DATA

Western blot analysis of CTAGE1 expression in K562 (A), mouse heart (B), rat liver (C) whole cell lysates. (Predicted band size: 8; 85 kD; Observed band size: 85 kD)

STORAGE

Store at 4°C short term. For long term storage, store at -20°C, avoiding freeze/thaw cycles.

NOTE

For Research Use Only. Not for diagnostic, therapeutics, prophylactic or in vivo use.