

**DATASHEET**

**CUTA Rabbit Polyclonal Antibody**

CAT. NO. APA15396

**KEY FEATURES**

Target	CUTA	Source / Host	Rabbit
Reactivity	Mouse	Clonality	Polyclonal
Applications	WB	Conjugation	Unconjugated
Form / Buffer	Liquid in 0.42% Potassium phosphate, 0.87% Sodium chloride, pH 7.3, 30% glycerol, and 0.01% sodium azide.		Storage at -20°C

**BACKGROUND**

May form part of a complex of membrane proteins attached to acetylcholinesterase (AChE).

**APPLICATION**

To ensure optimal assay performance, AREX recommends conducting reagent titration tailored to each testing system for optimal detection results.

WB	1:500 - 1:2000
----	----------------

\*Results are sample-specific. Please refer to your local assay conditions and test parameters for reference.

**PRODUCT OVERVIEW**

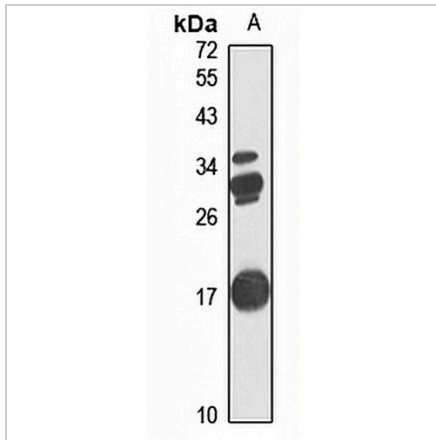
Description	Rabbit polyclonal antibody to CUTA
Specificity	Recognizes endogenous levels of CUTA protein
Antibody Type	Primary antibody
Immunogen	Recombinant fusion protein of human CUTA. The exact sequence is proprietary.
Purification	The antibody was purified by immunogen affinity chromatography.
Molecular Weight	Predicted: 16; Observed: 17 kD
Form/Buffer	Liquid in 0.42% Potassium phosphate, 0.87% Sodium chloride, pH 7.3, 30% glycerol, and 0.01% sodium azide.
Alternative Names	ACHAP; C6orf82; Protein CutA; Acetylcholinesterase-associated protein; Brain acetylcholinesterase putative membrane anchor
Gene Symbol	CUTA
Entrez Gene	51596(Human); 67675(Mouse)
SwissProt	O60888(Human); Q9CQ89(Mouse)

\*AREX continuously optimizes our products. Webpage content may not reflect the latest updates. For inquiries, please contact [info@arexbio.com](mailto:info@arexbio.com) or your local distributor.

\*Clone Number, Reactivity, Source/Host and Clonality can be found in the product name and Key Features section above.

**DATASHEET****CUTA Rabbit Polyclonal Antibody**

CAT. NO. APA15396

**DATA**

Western blot analysis of CUTA expression in mouse pancreas (A) whole cell lysates.  
(Predicted band size: 16; 19; 20 kD; Observed band size: 17 kD)

**STORAGE**

Store at 4°C short term. For long term storage, store at -20°C, avoiding freeze/thaw cycles.

**NOTE**

For Research Use Only. Not for diagnostic, therapeutics, prophylactic or in vivo use.