

DATASHEET

CXCL10 Rabbit Polyclonal Antibody

CAT. NO. APA15397

KEY FEATURES

Target	CXCL10	Source / Host	Rabbit
Reactivity	Human	Clonality	Polyclonal
Applications	WB	Conjugation	Unconjugated
Form / Buffer	Liquid in 0.42% Potassium phosphate, 0.87% Sodium chloride, pH 7.3, 30% glycerol, and 0.01% sodium azide.		Storage at -20°C

BACKGROUND

Pro-inflammatory cytokine that is involved in a wide variety of processes such as chemotaxis, differentiation, and activation of peripheral immune cells, regulation of cell growth, apoptosis and modulation of angiostatic effects . Plays thereby an important role during viral infections by stimulating the activation and migration of immune cells to the infected sites . Mechanistically, binding of CXCL10 to the CXCR3 receptor activates G protein-mediated signaling and results in downstream activation of phospholipase C-dependent pathway, an increase in intracellular calcium production and actin reorganization . In turn, recruitment of activated Th1 lymphocytes occurs at sites of inflammation .

APPLICATION

To ensure optimal assay performance, AREX recommends conducting reagent titration tailored to each testing system for optimal detection results.

WB	1:500 - 1:2000
----	----------------

*Results are sample-specific. Please refer to your local assay conditions and test parameters for reference.

PRODUCT OVERVIEW

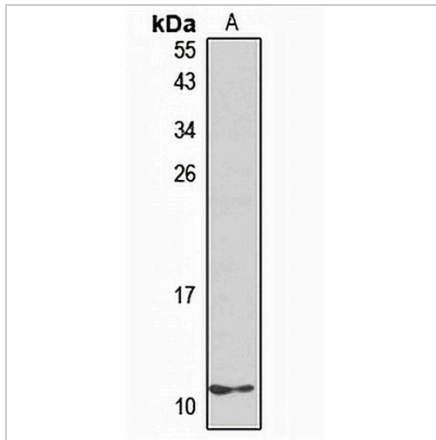
Description	Rabbit polyclonal antibody to CXCL10
Specificity	Recognizes endogenous levels of CXCL10 protein
Antibody Type	Primary antibody
Immunogen	Recombinant fusion protein of human CXCL10. The exact sequence is proprietary.
Purification	The antibody was purified by immunogen affinity chromatography.
Molecular Weight	Predicted: 10 kD; Observed: 11 kD
Form/Buffer	Liquid in 0.42% Potassium phosphate, 0.87% Sodium chloride, pH 7.3, 30% glycerol, and 0.01% sodium azide.
Alternative Names	INP10; SCYB10; C-X-C motif chemokine 10; 10 kDa interferon gamma-induced protein; Gamma-IP10; IP-10; Small-inducible cytokine B10
Gene Symbol	CXCL10
Entrez Gene	3627(Human)
SwissProt	P02778(Human)

*AREX continuously optimizes our products. Webpage content may not reflect the latest updates. For inquiries, please contact info@arexbio.com or your local distributor.

*Clone Number, Reactivity, Source/Host and Clonality can be found in the product name and Key Features section above.

DATASHEET**CXCL10 Rabbit Polyclonal Antibody**

CAT. NO. APA15397

DATA

Western blot analysis of CXCL10 expression in HeLa (A) whole cell lysates. (Predicted band size: 10 kD; Observed band size: 11 kD)

STORAGE

Store at 4°C short term. For long term storage, store at -20°C, avoiding freeze/thaw cycles.

NOTE

For Research Use Only. Not for diagnostic, therapeutics, prophylactic or in vivo use.