

DATASHEET

CXCL14 Rabbit Polyclonal Antibody

CAT. NO. APA15398

KEY FEATURES

Target	CXCL14	Source / Host	Rabbit
Reactivity	Human, Mouse	Clonality	Polyclonal
Applications	WB	Conjugation	Unconjugated
Form / Buffer	Liquid in 0.42% Potassium phosphate, 0.87% Sodium chloride, pH 7.3, 30% glycerol, and 0.01% sodium azide.		Storage at-20°C

BACKGROUND

Potent chemoattractant for neutrophils, and weaker for dendritic cells. Not chemotactic for T-cells, B-cells, monocytes, natural killer cells or granulocytes. Does not inhibit proliferation of myeloid progenitors in colony formation assays.

APPLICATION

To ensure optimal assay performance, AREX recommends conducting reagent titration tailored to each testing system for optimal detection results.

WB	1:500 - 1:2000
----	----------------

*Results are sample-specific. Please refer to your local assay conditions and test parameters for reference.

PRODUCT OVERVIEW

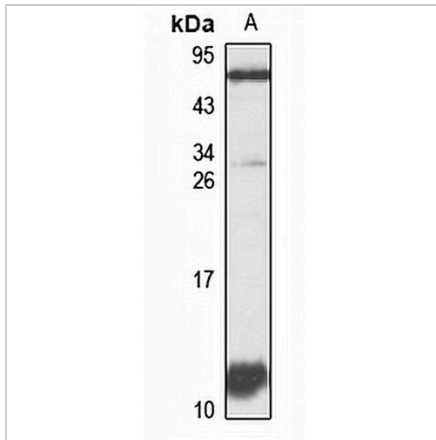
Description	Rabbit polyclonal antibody to CXCL14
Specificity	Recognizes endogenous levels of CXCL14 protein
Antibody Type	Primary antibody
Immunogen	Recombinant fusion protein of human CXCL14. The exact sequence is proprietary.
Purification	The antibody was purified by immunogen affinity chromatography.
Molecular Weight	Predicted: 13 kD; Observed: 11 kD
Form/Buffer	Liquid in 0.42% Potassium phosphate, 0.87% Sodium chloride, pH 7.3, 30% glycerol, and 0.01% sodium azide.
Alternative Names	MIP2G; NJAC; SCYB14; C-X-C motif chemokine 14; Chemokine BRAK; MIP-2G; Small-inducible cytokine B14
Gene Symbol	CXCL14
Entrez Gene	9547(Human); 57266(Mouse)
SwissProt	O95715(Human); Q9WUQ5(Mouse)

*AREX continuously optimizes our products. Webpage content may not reflect the latest updates. For inquiries, please contact info@arexbio.com or your local distributor.

*Clone Number, Reactivity, Source/Host and Clonality can be found in the product name and Key Features section above.

DATASHEET**CXCL14 Rabbit Polyclonal Antibody**

CAT. NO. APA15398

DATA

Western blot analysis of CXCL14 expression in NCIH460 (A) whole cell lysates. (Predicted band size: 13 kD; Observed band size: 11 kD)

STORAGE

Store at 4°C short term. For long term storage, store at -20°C, avoiding freeze/thaw cycles.

NOTE

For Research Use Only. Not for diagnostic, therapeutics, prophylactic or in vivo use.