

DATASHEET

CXCL6 Rabbit Polyclonal Antibody

CAT. NO. APA15400

KEY FEATURES

Target	CXCL6	Source / Host	Rabbit
Reactivity	Human, Mouse, Rat	Clonality	Polyclonal
Applications	WB	Conjugation	Unconjugated
Form / Buffer	Liquid in 0.42% Potassium phosphate, 0.87% Sodium chloride, pH 7.3, 30% glycerol, and 0.01% sodium azide.		Storage at -20°C

BACKGROUND

Chemotactic for neutrophil granulocytes. Signals through binding and activation of its receptors (CXCR1 and CXCR2). In addition to its chemotactic and angiogenic properties, it has strong antibacterial activity against Gram-positive and Gram-negative bacteria (90-fold-higher when compared to CXCL5 and CXCL7).

APPLICATION

To ensure optimal assay performance, AREX recommends conducting reagent titration tailored to each testing system for optimal detection results.

WB	1:500 - 1:2000
----	----------------

*Results are sample-specific. Please refer to your local assay conditions and test parameters for reference.

PRODUCT OVERVIEW

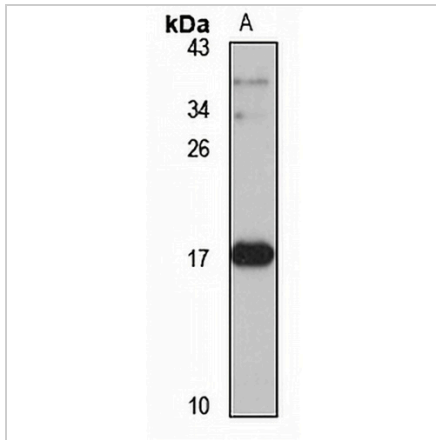
Description	Rabbit polyclonal antibody to CXCL6
Specificity	Recognizes endogenous levels of CXCL6 protein
Antibody Type	Primary antibody
Immunogen	Recombinant fusion protein of human CXCL6. The exact sequence is proprietary.
Purification	The antibody was purified by immunogen affinity chromatography.
Molecular Weight	Predicted: 11 kD; Observed: 17 kD
Form/Buffer	Liquid in 0.42% Potassium phosphate, 0.87% Sodium chloride, pH 7.3, 30% glycerol, and 0.01% sodium azide.
Alternative Names	GCP2; SCYB6; C-X-C motif chemokine 6; Chemokine alpha 3; CKA-3; Granulocyte chemotactic protein 2; GCP-2; Small-inducible cytokine B6
Gene Symbol	CXCL6
Entrez Gene	6372(Human)
SwissProt	P80162(Human)

*AREX continuously optimizes our products. Webpage content may not reflect the latest updates. For inquiries, please contact info@arexbio.com or your local distributor.

*Clone Number, Reactivity, Source/Host and Clonality can be found in the product name and Key Features section above.

DATASHEET**CXCL6 Rabbit Polyclonal Antibody**

CAT. NO. APA15400

DATA

Western blot analysis of CXCL6 expression in A549 (A) whole cell lysates. (Predicted band size: 11 kD; Observed band size: 17 kD)

STORAGE

Store at 4°C short term. For long term storage, store at -20°C, avoiding freeze/thaw cycles.

NOTE

For Research Use Only. Not for diagnostic, therapeutics, prophylactic or in vivo use.