

DATASHEET

CYP27B1 Rabbit Polyclonal Antibody

CAT. NO. APA15403

KEY FEATURES

Target	CYP27B1	Source / Host	Rabbit
Reactivity	Human, Rat	Clonality	Polyclonal
Applications	WB	Conjugation	Unconjugated
Form / Buffer	Liquid in 0.42% Potassium phosphate, 0.87% Sodium chloride, pH 7.3, 30% glycerol, and 0.01% sodium azide.		Storage at-20°C

BACKGROUND

A cytochrome P450 monooxygenase involved in vitamin D metabolism and in calcium and phosphorus homeostasis. Catalyzes the rate-limiting step in the activation of vitamin D in the kidney, namely the hydroxylation of 25-hydroxyvitamin D3/calcidiol at the C1 α -position to form the hormonally active form of vitamin D3, 1 α ,25-dihydroxyvitamin D3/calcitriol that acts via the vitamin D receptor (VDR). Has 1 α -hydroxylase activity on vitamin D intermediates of the CYP24A1-mediated inactivation pathway. Converts 24R,25-dihydroxyvitamin D3/secalciferol to 1- α ,24,25-trihydroxyvitamin D3, an active ligand of VDR. Also active on 25-hydroxyvitamin D2.

APPLICATION

To ensure optimal assay performance, AREX recommends conducting reagent titration tailored to each testing system for optimal detection results.

WB	1:500 - 1:1000
----	----------------

*Results are sample-specific. Please refer to your local assay conditions and test parameters for reference.

PRODUCT OVERVIEW

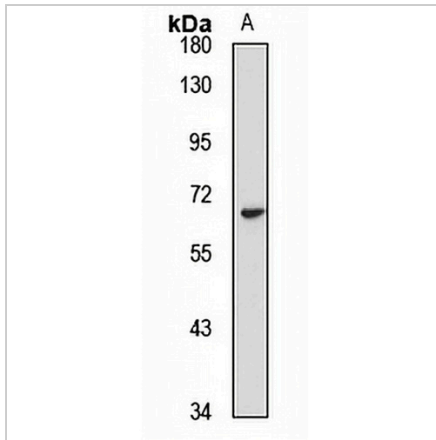
Description	Rabbit polyclonal antibody to CYP27B1
Specificity	Recognizes endogenous levels of CYP27B1 protein
Antibody Type	Primary antibody
Immunogen	Recombinant fusion protein of human CYP27B1. The exact sequence is proprietary.
Purification	The antibody was purified by immunogen affinity chromatography.
Molecular Weight	Predicted: 56 kD; Observed: 63 kD
Form/Buffer	Liquid in 0.42% Potassium phosphate, 0.87% Sodium chloride, pH 7.3, 30% glycerol, and 0.01% sodium azide.
Alternative Names	CYP1ALPHA; CYP27B; 25-hydroxyvitamin D-1 α hydroxylase mitochondrial; 25-OHD-1 α -hydroxylase; 25-hydroxyvitamin D(3) 1- α -hydroxylase; VD3 1A hydroxylase; Calcidiol 1-monoxygenase; Cytochrome P450 subfamily XXVII B polypeptide 1; Cytochrome P450C1 α ; Cytochrome P450VD1- α ; Cytochrome p450 27B1
Gene Symbol	CYP27B1
Entrez Gene	1594(Human); 114700(Rat)
SwissProt	O15528(Human); O35132(Rat)

*AREX continuously optimizes our products. Webpage content may not reflect the latest updates. For inquiries, please contact info@arexbio.com or your local distributor.

*Clone Number, Reactivity, Source/Host and Clonality can be found in the product name and Key Features section above.

DATASHEET**CYP27B1 Rabbit Polyclonal Antibody**

CAT. NO. APA15403

DATA

Western blot analysis of CYP27B1 expression in rat liver (A) whole cell lysates. (Predicted band size: 56 kD; Observed band size: 63 kD)

STORAGE

Store at 4°C short term. For long term storage, store at -20°C, avoiding freeze/thaw cycles.

NOTE

For Research Use Only. Not for diagnostic, therapeutics, prophylactic or in vivo use.