

DATASHEET

Cytochrome P450 4B1 Rabbit Polyclonal Antibody

CAT. NO. APA15404

KEY FEATURES

Target	Cytochrome P450 4B1	Source / Host	Rabbit
Reactivity	Human, Mouse, Rat	Clonality	Polyclonal
Applications	WB	Conjugation	Unconjugated
Form / Buffer	Liquid in 0.42% Potassium phosphate, 0.87% Sodium chloride, pH 7.3, 30% glycerol, and 0.01% sodium azide.		Storage at -20°C

BACKGROUND

Cytochromes P450 are a group of heme-thiolate monooxygenases. In liver microsomes, this enzyme is involved in an NADPH-dependent electron transport pathway. It oxidizes a variety of structurally unrelated compounds, including steroids, fatty acids, and xenobiotics.

APPLICATION

To ensure optimal assay performance, AREX recommends conducting reagent titration tailored to each testing system for optimal detection results.

WB	1:500 - 1:1000
----	----------------

*Results are sample-specific. Please refer to your local assay conditions and test parameters for reference.

PRODUCT OVERVIEW

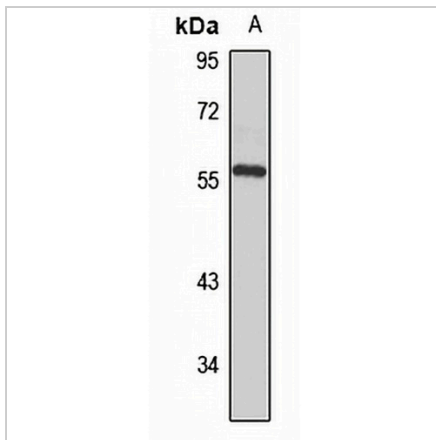
Description	Rabbit polyclonal antibody to Cytochrome P450 4B1
Specificity	Recognizes endogenous levels of Cytochrome P450 4B1 protein
Antibody Type	Primary antibody
Immunogen	Recombinant fusion protein of human Cytochrome P450 4B1. The exact sequence is proprietary.
Purification	The antibody was purified by immunogen affinity chromatography.
Molecular Weight	Predicted: 58; Observed: 59 kD
Form/Buffer	Liquid in 0.42% Potassium phosphate, 0.87% Sodium chloride, pH 7.3, 30% glycerol, and 0.01% sodium azide.
Alternative Names	Cytochrome P450 4B1; CYP1B1; Cytochrome P450-HP
Gene Symbol	CYP4B1
Entrez Gene	1580(Human); 13120(Mouse); 24307(Rat)
SwissProt	P13584(Human); Q64462(Mouse); P15129(Rat)

*AREX continuously optimizes our products. Webpage content may not reflect the latest updates. For inquiries, please contact info@arexbio.com or your local distributor.

*Clone Number, Reactivity, Source/Host and Clonality can be found in the product name and Key Features section above.

DATASHEET**Cytochrome P450 4B1 Rabbit Polyclonal Antibody**

CAT. NO. APA15404

DATA

Western blot analysis of Cytochrome P450 4B1 expression in MCF7 (A) whole cell lysates.
(Predicted band size: 58; 59 kD; Observed band size: 59 kD)

STORAGE

Store at 4°C short term. For long term storage, store at -20°C, avoiding freeze/thaw cycles.

NOTE

For Research Use Only. Not for diagnostic, therapeutics, prophylactic or in vivo use.