

**DATASHEET**

**Cytohesin-2 Rabbit Polyclonal Antibody**

CAT. NO. APA15407

**KEY FEATURES**

Target	Cytohesin-2	Source / Host	Rabbit
Reactivity	Human, Mouse, Rat	Clonality	Polyclonal
Applications	WB	Conjugation	Unconjugated
Form / Buffer	Liquid in 0.42% Potassium phosphate, 0.87% Sodium chloride, pH 7.3, 30% glycerol, and 0.01% sodium azide.		Storage at -20°C

**BACKGROUND**

Acts as a guanine-nucleotide exchange factor (GEF). Promotes guanine-nucleotide exchange on ARF1, ARF3 and ARF6. Activates ARF factors through replacement of GDP with GTP . The cell membrane form, in association with ARL4 proteins, recruits ARF6 to the plasma membrane . Promotes guanine-nucleotide exchange on ARF1, ARF3 and ARF6. Activates ARF factors through replacement of GDP with GTP . The cell membrane form, in association with ARL4 proteins, recruits ARF6 to the plasma membrane . Involved in neurite growth .

**APPLICATION**

To ensure optimal assay performance, AREX recommends conducting reagent titration tailored to each testing system for optimal detection results.

WB	1:500 - 1:1000
----	----------------

\*Results are sample-specific. Please refer to your local assay conditions and test parameters for reference.

**PRODUCT OVERVIEW**

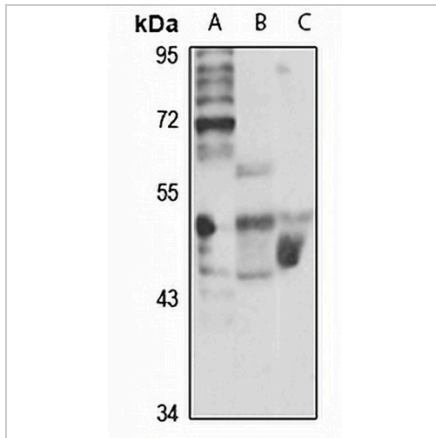
Description	Rabbit polyclonal antibody to Cytohesin-2
Specificity	Recognizes endogenous levels of Cytohesin-2 protein
Antibody Type	Primary antibody
Immunogen	Recombinant fusion protein of human Cytohesin-2. The exact sequence is proprietary.
Purification	The antibody was purified by immunogen affinity chromatography.
Molecular Weight	Predicted: 46 kD; Observed: 47 kD
Form/Buffer	Liquid in 0.42% Potassium phosphate, 0.87% Sodium chloride, pH 7.3, 30% glycerol, and 0.01% sodium azide.
Alternative Names	ARNO; PSCD2; PSCD2L; Cytohesin-2; ARF exchange factor; ARF nucleotide-binding site opener; Protein ARNO; PH SEC7 and coiled-coil domain-containing protein 2
Gene Symbol	CYTH2
Entrez Gene	9266(Human); 19158(Mouse); 116692(Rat)
SwissProt	Q99418(Human); P63034(Mouse); P63035(Rat)

\*AREX continuously optimizes our products. Webpage content may not reflect the latest updates. For inquiries, please contact [info@arexbio.com](mailto:info@arexbio.com) or your local distributor.

\*Clone Number, Reactivity, Source/Host and Clonality can be found in the product name and Key Features section above.

**DATASHEET****Cytohesin-2 Rabbit Polyclonal Antibody**

CAT. NO. APA15407

**DATA**

Western blot analysis of Cytohesin-2 expression in HepG2 (A), mouse ovary (B), rat brain (C) whole cell lysates. (Predicted band size: 46 kD; Observed band size: 47 kD)

**STORAGE**

Store at 4°C short term. For long term storage, store at -20°C, avoiding freeze/thaw cycles.

**NOTE**

For Research Use Only. Not for diagnostic, therapeutics, prophylactic or in vivo use.