

## DATASHEET

# DCLK1 Rabbit Polyclonal Antibody

CAT. NO. APA15418

### KEY FEATURES

Target	DCLK1	Source / Host	Rabbit
Reactivity	Human, Mouse, Rat	Clonality	Polyclonal
Applications	WB, IHC, IF/ICC	Conjugation	Unconjugated
Form / Buffer	Liquid in 0.42% Potassium phosphate, 0.87% Sodium chloride, pH 7.3, 30% glycerol, and 0.01% sodium azide.		Storage at -20°C

### BACKGROUND

Probable kinase that may be involved in a calcium-signaling pathway controlling neuronal migration in the developing brain. May also participate in functions of the mature nervous system.

### APPLICATION

To ensure optimal assay performance, AREX recommends conducting reagent titration tailored to each testing system for optimal detection results.

WB	1:500 - 1:2000
IHC	1:50 - 1:200
IF/ICC	1:50 - 1:200

\*Results are sample-specific. Please refer to your local assay conditions and test parameters for reference.

### PRODUCT OVERVIEW

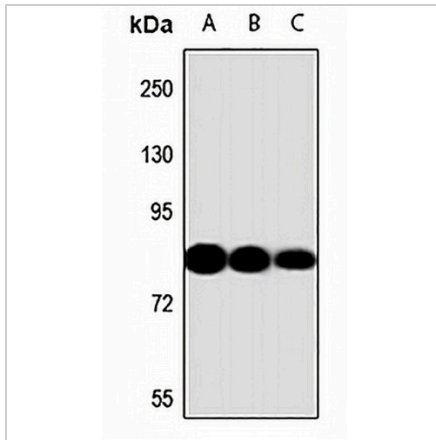
Description	Rabbit polyclonal antibody to DCLK1
Specificity	Recognizes endogenous levels of DCLK1 protein
Antibody Type	Primary antibody
Immunogen	KLH-conjugated synthetic peptide of human DCLK1. The exact sequence is proprietary.
Purification	The antibody was purified by immunogen affinity chromatography.
Molecular Weight	Predicted: 46; Observed: 82 kD
Form/Buffer	Liquid in 0.42% Potassium phosphate, 0.87% Sodium chloride, pH 7.3, 30% glycerol, and 0.01% sodium azide.
Alternative Names	DCAMKL1; DCDC3A; KIAA0369; Serine/threonine-protein kinase DCLK1; Doublecortin domain-containing protein 3A; Doublecortin-like and CAM kinase-like 1; Doublecortin-like kinase 1
Gene Symbol	DCLK1
Entrez Gene	9201(Human); 13175(Mouse); 83825(Rat)
SwissProt	O15075(Human); Q9JLM8(Mouse); O08875(Rat)

\*AREX continuously optimizes our products. Webpage content may not reflect the latest updates. For inquiries, please contact [info@arexbio.com](mailto:info@arexbio.com) or your local distributor.

\*Clone Number, Reactivity, Source/Host and Clonality can be found in the product name and Key Features section above.

**DATASHEET****DCLK1 Rabbit Polyclonal Antibody**

CAT. NO. APA15418

**DATA**

Western blot analysis of DCLK1 expression in Human brain (A), mouse brain (B), rat brain (C) whole cell lysates. (Predicted band size: 46; 47; 81; 82 kD; Observed band size: 82 kD)

**STORAGE**

Store at 4°C short term. For long term storage, store at -20°C, avoiding freeze/thaw cycles.

**NOTE**

For Research Use Only. Not for diagnostic, therapeutics, prophylactic or in vivo use.