

DATASHEET

DCUN1D1 Rabbit Polyclonal Antibody

CAT. NO. APA15422

KEY FEATURES

Target	DCUN1D1	Source / Host	Rabbit
Reactivity	Human, Mouse	Clonality	Polyclonal
Applications	WB	Conjugation	Unconjugated
Form / Buffer	Liquid in 0.42% Potassium phosphate, 0.87% Sodium chloride, pH 7.3, 30% glycerol, and 0.01% sodium azide.		Storage at-20°C

BACKGROUND

Part of an E3 ubiquitin ligase complex for neddylation . Promotes neddylation of cullin components of E3 cullin-RING ubiquitin ligase complexes . Acts by binding to cullin-RBX1 complexes in the cytoplasm and promoting their nuclear translocation, enhancing recruitment of E2-NEDD8 (UBE2M-NEDD8) thioester to the complex, and optimizing the orientation of proteins in the complex to allow efficient transfer of NEDD8 from the E2 to the cullin substrates. Involved in the release of inhibitory effects of CAND1 on cullin-RING ligase E3 complex assembly and activity . Also acts as an oncogene facilitating malignant transformation and carcinogenic progression .

APPLICATION

To ensure optimal assay performance, AREX recommends conducting reagent titration tailored to each testing system for optimal detection results.

WB	1:500 - 1:2000
----	----------------

*Results are sample-specific. Please refer to your local assay conditions and test parameters for reference.

PRODUCT OVERVIEW

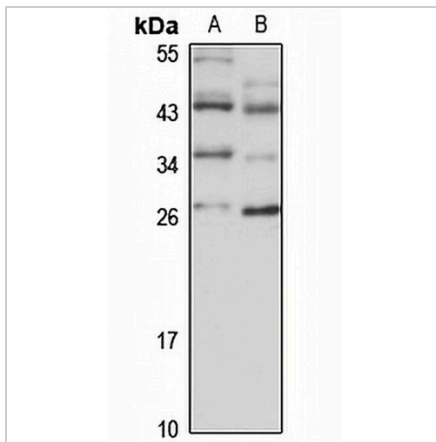
Description	Rabbit polyclonal antibody to DCUN1D1
Specificity	Recognizes endogenous levels of DCUN1D1 protein
Antibody Type	Primary antibody
Immunogen	Recombinant fusion protein of human DCUN1D1. The exact sequence is proprietary.
Purification	The antibody was purified by immunogen affinity chromatography.
Molecular Weight	Predicted: 30 kD; Observed: 27 kD
Form/Buffer	Liquid in 0.42% Potassium phosphate, 0.87% Sodium chloride, pH 7.3, 30% glycerol, and 0.01% sodium azide.
Alternative Names	DCUN1L1; RP42; SCCRO; DCN1-like protein 1; DCUN1 domain-containing protein 1; Defective in cullin neddylation protein 1-like protein 1; Squamous cell carcinoma-related oncogene
Gene Symbol	DCUN1D1
Entrez Gene	54165(Human); 114893(Mouse)
SwissProt	Q96GG9(Human); Q9QZ73(Mouse)

*AREX continuously optimizes our products. Webpage content may not reflect the latest updates. For inquiries, please contact info@arexbio.com or your local distributor.

*Clone Number, Reactivity, Source/Host and Clonality can be found in the product name and Key Features section above.

DATASHEET**DCUN1D1 Rabbit Polyclonal Antibody**

CAT. NO. APA15422

DATA

Western blot analysis of DCUN1D1 expression in A549 (A), mouse heart (B) whole cell lysates. (Predicted band size: 30 kD; Observed band size: 27 kD)

STORAGE

Store at 4°C short term. For long term storage, store at -20°C, avoiding freeze/thaw cycles.

NOTE

For Research Use Only. Not for diagnostic, therapeutics, prophylactic or in vivo use.