

DATASHEET

DDC Rabbit Polyclonal Antibody

CAT. NO. APA15423

KEY FEATURES

Target	DDC	Source / Host	Rabbit
Reactivity	Human, Mouse, Rat	Clonality	Polyclonal
Applications	WB	Conjugation	Unconjugated
Form / Buffer	Liquid in 0.42% Potassium phosphate, 0.87% Sodium chloride, pH 7.3, 30% glycerol, and 0.01% sodium azide.		Storage at -20°C

BACKGROUND

Catalyzes the decarboxylation of L-3,4-dihydroxyphenylalanine (DOPA) to dopamine and L-5-hydroxytryptophan to serotonin.

APPLICATION

To ensure optimal assay performance, AREX recommends conducting reagent titration tailored to each testing system for optimal detection results.

WB	1:500 - 1:2000
----	----------------

*Results are sample-specific. Please refer to your local assay conditions and test parameters for reference.

PRODUCT OVERVIEW

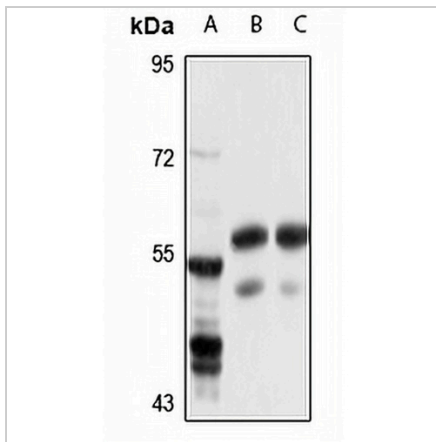
Description	Rabbit polyclonal antibody to DDC
Specificity	Recognizes endogenous levels of DDC protein
Antibody Type	Primary antibody
Immunogen	Recombinant fusion protein of human DDC. The exact sequence is proprietary.
Purification	The antibody was purified by immunogen affinity chromatography.
Molecular Weight	Predicted: 37; Observed: 54-56 kD
Form/Buffer	Liquid in 0.42% Potassium phosphate, 0.87% Sodium chloride, pH 7.3, 30% glycerol, and 0.01% sodium azide.
Alternative Names	AADC; Aromatic-L-amino-acid decarboxylase; AADC; DOPA decarboxylase; DDC
Gene Symbol	DDC
Entrez Gene	1644(Human); 13195(Mouse); 24311(Rat)
SwissProt	P20711(Human); O88533(Mouse); P14173(Rat)

*AREX continuously optimizes our products. Webpage content may not reflect the latest updates. For inquiries, please contact info@arexbio.com or your local distributor.

*Clone Number, Reactivity, Source/Host and Clonality can be found in the product name and Key Features section above.

DATASHEET**DDC Rabbit Polyclonal Antibody**

CAT. NO. APA15423

DATA

Western blot analysis of DDC expression in SW620 (A), mouse kidney (B), rat liver (C) whole cell lysates. (Predicted band size: 37; 44; 45; 53 kD; Observed band size: 54-56 kD)

STORAGE

Store at 4°C short term. For long term storage, store at -20°C, avoiding freeze/thaw cycles.

NOTE

For Research Use Only. Not for diagnostic, therapeutics, prophylactic or in vivo use.