

DATASHEET

DDI1 Rabbit Polyclonal Antibody

CAT. NO. APA15424

KEY FEATURES

Target	DDI1	Source / Host	Rabbit
Reactivity	Human, Mouse, Rat	Clonality	Polyclonal
Applications	WB	Conjugation	Unconjugated
Form / Buffer	Liquid in 0.42% Potassium phosphate, 0.87% Sodium chloride, pH 7.3, 30% glycerol, and 0.01% sodium azide.		Storage at -20°C

BACKGROUND

Probable aspartic protease (Probable). Seems to act as a proteasomal shuttle which links the proteasome and replication fork proteins like RTF2 (Probable). Required, with DDI2, for cellular survival following replication stress. Together or redundantly with DDI2, removes RTF2 from stalled forks to allow cell cycle progression after replication stress and maintains genome integrity . Seems to act as a proteasomal shuttle which links the proteasome and replication fork proteins like RTF2 (Probable). Required, with DDI2, for cellular survival following replication stress. Together or redundantly with DDI2, removes RTF2 from stalled forks to allow cell cycle progression after replication stress and maintains genome integrity .

APPLICATION

To ensure optimal assay performance, AREX recommends conducting reagent titration tailored to each testing system for optimal detection results.

WB	1:500 - 1:2000
----	----------------

*Results are sample-specific. Please refer to your local assay conditions and test parameters for reference.

PRODUCT OVERVIEW

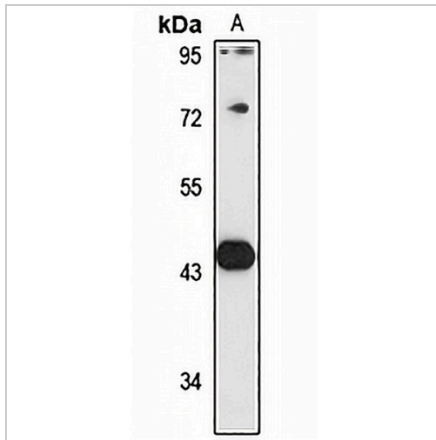
Description	Rabbit polyclonal antibody to DDI1
Specificity	Recognizes endogenous levels of DDI1 protein
Antibody Type	Primary antibody
Immunogen	Recombinant fusion protein of human DDI1. The exact sequence is proprietary.
Purification	The antibody was purified by immunogen affinity chromatography.
Molecular Weight	Predicted: 44 kD; Observed: 44 kD
Form/Buffer	Liquid in 0.42% Potassium phosphate, 0.87% Sodium chloride, pH 7.3, 30% glycerol, and 0.01% sodium azide.
Alternative Names	Protein DDI1 homolog 1
Gene Symbol	DDI1
Entrez Gene	414301(Human); 71829(Mouse); 367012(Rat)
SwissProt	Q8WTU0(Human); Q9DAF3(Mouse); A0JPP7(Rat)

*AREX continuously optimizes our products. Webpage content may not reflect the latest updates. For inquiries, please contact info@arexbio.com or your local distributor.

*Clone Number, Reactivity, Source/Host and Clonality can be found in the product name and Key Features section above.

DATASHEET**DDI1 Rabbit Polyclonal Antibody**

CAT. NO. APA15424

DATA

Western blot analysis of DDI1 expression in mouse testis (A) whole cell lysates. (Predicted band size: 44 kD; Observed band size: 44 kD)

STORAGE

Store at 4°C short term. For long term storage, store at -20°C, avoiding freeze/thaw cycles.

NOTE

For Research Use Only. Not for diagnostic, therapeutics, prophylactic or in vivo use.