

DATASHEET

DDX51 Rabbit Polyclonal Antibody

CAT. NO. APA15428

KEY FEATURES

Target	DDX51	Source / Host	Rabbit
Reactivity	Human, Mouse, Rat	Clonality	Polyclonal
Applications	WB	Conjugation	Unconjugated
Form / Buffer	Liquid in 0.42% Potassium phosphate, 0.87% Sodium chloride, pH 7.3, 30% glycerol, and 0.01% sodium azide.		Storage at-20°C

BACKGROUND

ATP-binding RNA helicase involved in the biogenesis of 60S ribosomal subunits.

APPLICATION

To ensure optimal assay performance, AREX recommends conducting reagent titration tailored to each testing system for optimal detection results.

WB	1:500 - 1:2000
----	----------------

*Results are sample-specific. Please refer to your local assay conditions and test parameters for reference.

PRODUCT OVERVIEW

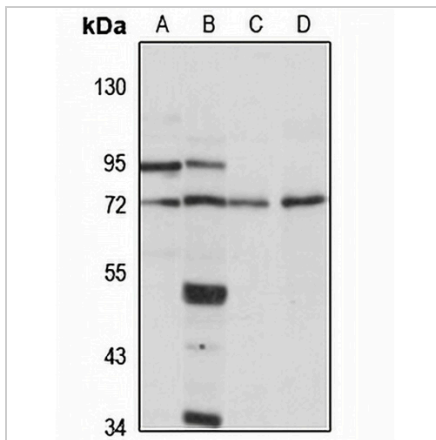
Description	Rabbit polyclonal antibody to DDX51
Specificity	Recognizes endogenous levels of DDX51 protein
Antibody Type	Primary antibody
Immunogen	Recombinant fusion protein of human DDX51. The exact sequence is proprietary.
Purification	The antibody was purified by immunogen affinity chromatography.
Molecular Weight	Predicted: 72 kD; Observed: 72 kD
Form/Buffer	Liquid in 0.42% Potassium phosphate, 0.87% Sodium chloride, pH 7.3, 30% glycerol, and 0.01% sodium azide.
Alternative Names	ATP-dependent RNA helicase DDX51; DEAD box protein 51
Gene Symbol	DDX51
Entrez Gene	317781(Human); 69663(Mouse)
SwissProt	Q8N8A6(Human); Q6P9R1(Mouse)

*AREX continuously optimizes our products. Webpage content may not reflect the latest updates. For inquiries, please contact info@arexbio.com or your local distributor.

*Clone Number, Reactivity, Source/Host and Clonality can be found in the product name and Key Features section above.

DATASHEET**DDX51 Rabbit Polyclonal Antibody**

CAT. NO. APA15428

DATA

Western blot analysis of DDX51 expression in Jurkat (A), mouse brain (B), mouse spleen (C), rat testis (D) whole cell lysates. (Predicted band size: 72 kDa; Observed band size: 72 kDa)

STORAGE

Store at 4°C short term. For long term storage, store at -20°C, avoiding freeze/thaw cycles.

NOTE

For Research Use Only. Not for diagnostic, therapeutics, prophylactic or in vivo use.