

DATASHEET

RCK Rabbit Polyclonal Antibody

CAT. NO. APA15430

KEY FEATURES

Target	RCK	Source / Host	Rabbit
Reactivity	Human, Mouse, Rat	Clonality	Polyclonal
Applications	WB, IHC, IF/ICC	Conjugation	Unconjugated
Form / Buffer	Liquid in 0.42% Potassium phosphate, 0.87% Sodium chloride, pH 7.3, 30% glycerol, and 0.01% sodium azide.		Storage at -20°C

BACKGROUND

Essential for the formation of P-bodies, cytosolic membrane-less ribonucleoprotein granules involved in RNA metabolism through the coordinated storage of mRNAs encoding regulatory functions . Plays a role in P-bodies to coordinate the storage of translationally inactive mRNAs in the cytoplasm and prevent their degradation . In the process of mRNA degradation, plays a role in mRNA decapping . Blocks autophagy in nutrient-rich conditions by repressing the expression of ATG-related genes through degradation of their transcripts .

APPLICATION

To ensure optimal assay performance, AREX recommends conducting reagent titration tailored to each testing system for optimal detection results.

WB	1:500 - 1:2000
IHC	1:50 - 1:200
IF/ICC	1:50 - 1:200

*Results are sample-specific. Please refer to your local assay conditions and test parameters for reference.

PRODUCT OVERVIEW

Description	Rabbit polyclonal antibody to RCK
Specificity	Recognizes endogenous levels of RCK protein
Antibody Type	Primary antibody
Immunogen	KLH-conjugated synthetic peptide of human RCK. The exact sequence is proprietary.
Purification	The antibody was purified by immunogen affinity chromatography.
Molecular Weight	Predicted: 54 kD; Observed: 54 kD
Form/Buffer	Liquid in 0.42% Potassium phosphate, 0.87% Sodium chloride, pH 7.3, 30% glycerol, and 0.01% sodium azide.
Alternative Names	HLR2; RCK; Probable ATP-dependent RNA helicase DDX6; ATP-dependent RNA helicase p54; DEAD box protein 6; Oncogene RCK
Gene Symbol	DDX6
Entrez Gene	1656(Human); 13209(Mouse)
SwissProt	P26196(Human); P54823(Mouse)

*AREX continuously optimizes our products. Webpage content may not reflect the latest updates. For inquiries, please contact info@arexbio.com or your local distributor.

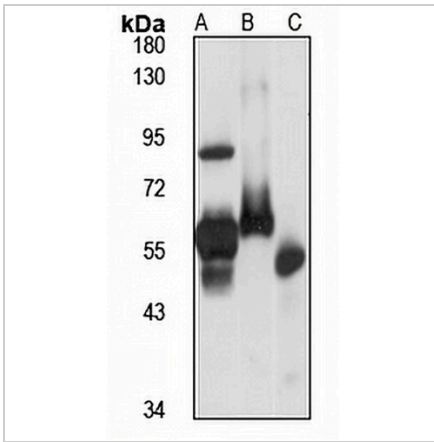
*Clone Number, Reactivity, Source/Host and Clonality can be found in the product name and Key Features section above.

DATASHEET

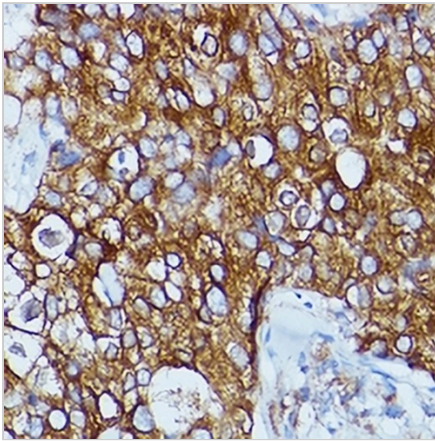
RCK Rabbit Polyclonal Antibody

CAT. NO. APA15430

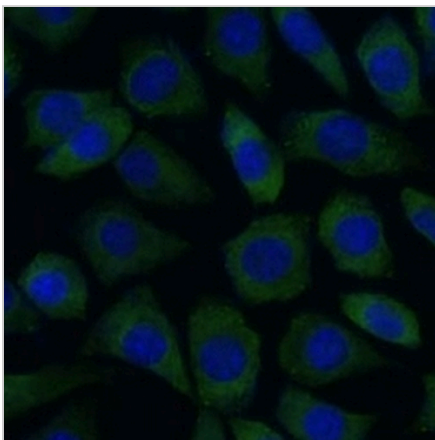
DATA



Western blot analysis of RCK expression in HepG2 (A), NIH3T3 (B), rat spleen (C) whole cell lysates. (Predicted band size: 54 kD; Observed band size: 54 kD)



Immunohistochemical analysis of RCK staining in human breast cancer formalin fixed paraffin embedded tissue section. The section was pre-treated using heat mediated antigen retrieval with sodium citrate buffer (pH 6.0). The section was then incubated with the antibody at room temperature and detected using an HRP conjugated compact polymer system. DAB was used as the chromogen. The section was then counterstained with haematoxylin and mounted with DPX.



Immunofluorescent analysis of RCK staining in L929 cells. Formalin-fixed cells were permeabilized with 0.1% Triton X-100 in TBS for 5-10 minutes and blocked with 3% BSA-PBS for 30 minutes at room temperature. Cells were probed with the primary antibody in 3% BSA-PBS and incubated overnight at 4 °C in a hidified chamber. Cells were washed with PBST and incubated with a Alexa Fluor 488-conjugated secondary antibody (green) in PBS at room temperature in the dark.

STORAGE

Store at 4°C short term. For long term storage, store at -20°C, avoiding freeze/thaw cycles.

NOTE

For Research Use Only. Not for diagnostic, therapeutics, prophylactic or in vivo use.