

**DATASHEET**

**DECR2 Rabbit Polyclonal Antibody**

CAT. NO. APA15432

**KEY FEATURES**

Target	DECR2	Source / Host	Rabbit
Reactivity	Human, Mouse, Rat	Clonality	Polyclonal
Applications	WB	Conjugation	Unconjugated
Form / Buffer	Liquid in 0.42% Potassium phosphate, 0.87% Sodium chloride, pH 7.3, 30% glycerol, and 0.01% sodium azide.		Storage at -20°C

**BACKGROUND**

Auxiliary enzyme of beta-oxidation. Participates in the degradation of unsaturated fatty enoyl-CoA esters having double bonds in both even- and odd-numbered positions in peroxisome. Catalyzes the NADP-dependent reduction of 2,4-dienoyl-CoA to yield trans-3-enoyl-CoA. Has activity towards short and medium chain 2,4-dienoyl-CoAs, but also towards 2,4,7,10,13,16,19-docosaheptaenoyl-CoA, suggesting that it does not constitute a rate limiting step in the peroxisomal degradation of docosahexaenoic acid.

**APPLICATION**

To ensure optimal assay performance, AREX recommends conducting reagent titration tailored to each testing system for optimal detection results.

WB	1:500 - 1:2000
----	----------------

\*Results are sample-specific. Please refer to your local assay conditions and test parameters for reference.

**PRODUCT OVERVIEW**

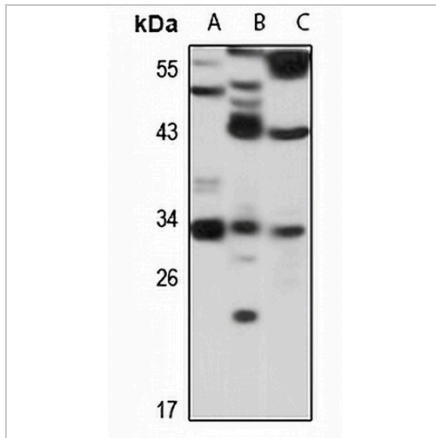
Description	Rabbit polyclonal antibody to DECR2
Specificity	Recognizes endogenous levels of DECR2 protein
Antibody Type	Primary antibody
Immunogen	Recombinant fusion protein of human DECR2. The exact sequence is proprietary.
Purification	The antibody was purified by immunogen affinity chromatography.
Molecular Weight	Predicted: 30 kD; Observed: 31 kD
Form/Buffer	Liquid in 0.42% Potassium phosphate, 0.87% Sodium chloride, pH 7.3, 30% glycerol, and 0.01% sodium azide.
Alternative Names	PDCR; Peroxisomal 2 4-dienoyl-CoA reductase; pDCR; 2 4-dienoyl-CoA reductase 2
Gene Symbol	DECR2
Entrez Gene	26063(Human); 26378(Mouse); 64461(Rat)
SwissProt	Q9NUI1(Human); Q9WV68(Mouse); Q9Z2M4(Rat)

\*AREX continuously optimizes our products. Webpage content may not reflect the latest updates. For inquiries, please contact [info@arexbio.com](mailto:info@arexbio.com) or your local distributor.

\*Clone Number, Reactivity, Source/Host and Clonality can be found in the product name and Key Features section above.

**DATASHEET****DECR2 Rabbit Polyclonal Antibody**

CAT. NO. APA15432

**DATA**

Western blot analysis of DECR2 expression in HeLa (A), mouse liver (B), rat kidney (C) whole cell lysates. (Predicted band size: 30 kD; Observed band size: 31 kD)

**STORAGE**

Store at 4°C short term. For long term storage, store at -20°C, avoiding freeze/thaw cycles.

**NOTE**

For Research Use Only. Not for diagnostic, therapeutics, prophylactic or in vivo use.