

## DATASHEET

# DEF6 Rabbit Polyclonal Antibody

CAT. NO. APA15434

### KEY FEATURES

Target	DEF6	Source / Host	Rabbit
Reactivity	Human, Mouse, Rat	Clonality	Polyclonal
Applications	WB	Conjugation	Unconjugated
Form / Buffer	Liquid in 0.42% Potassium phosphate, 0.87% Sodium chloride, pH 7.3, 30% glycerol, and 0.01% sodium azide.		Storage at -20°C

### BACKGROUND

Phosphatidylinositol 3,4,5-trisphosphate-dependent guanine nucleotide exchange factor (GEF) which plays a role in the activation of Rho GTPases RAC1, RhoA and CDC42 which plays a role in the activation of Rho GTPases RAC1, RhoA and CDC42 . Can regulate cell morphology in cooperation with activated RAC1 . Involved in immune homeostasis by ensuring proper trafficking and availability of T-cell regulator CTLA-4 at T-cell surface . Plays a role in Th2 (T helper cells) development and/or activation, perhaps by interfering with ZAP70 signaling .

### APPLICATION

To ensure optimal assay performance, AREX recommends conducting reagent titration tailored to each testing system for optimal detection results.

WB	1:500 - 1:2000
----	----------------

\*Results are sample-specific. Please refer to your local assay conditions and test parameters for reference.

### PRODUCT OVERVIEW

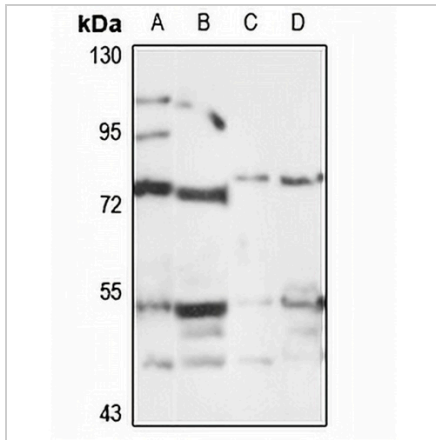
Description	Rabbit polyclonal antibody to DEF6
Specificity	Recognizes endogenous levels of DEF6 protein
Antibody Type	Primary antibody
Immunogen	Recombinant fusion protein of human DEF6. The exact sequence is proprietary.
Purification	The antibody was purified by immunogen affinity chromatography.
Molecular Weight	Predicted: 73 kD; Observed: 74 kD
Form/Buffer	Liquid in 0.42% Potassium phosphate, 0.87% Sodium chloride, pH 7.3, 30% glycerol, and 0.01% sodium azide.
Alternative Names	IBP; Differentially expressed in FDCP 6 homolog; DEF-6; IRF4-binding protein
Gene Symbol	DEF6
Entrez Gene	50619(Human); 23853(Mouse)
SwissProt	Q9H4E7(Human); Q8C2K1(Mouse)

\*AREX continuously optimizes our products. Webpage content may not reflect the latest updates. For inquiries, please contact [info@arexbio.com](mailto:info@arexbio.com) or your local distributor.

\*Clone Number, Reactivity, Source/Host and Clonality can be found in the product name and Key Features section above.

**DATASHEET****DEF6 Rabbit Polyclonal Antibody**

CAT. NO. APA15434

**DATA**

Western blot analysis of DEF6 expression in U87MG (A), mouse brain (B), rat spleen (C), rat brain (D) whole cell lysates. (Predicted band size: 73 kD; Observed band size: 74 kD)

**STORAGE**

Store at 4°C short term. For long term storage, store at -20°C, avoiding freeze/thaw cycles.

**NOTE**

For Research Use Only. Not for diagnostic, therapeutics, prophylactic or in vivo use.