

DATASHEET

DEPTOR Rabbit Polyclonal Antibody

CAT. NO. APA15440

KEY FEATURES

Target	DEPTOR	Source / Host	Rabbit
Reactivity	Human, Mouse	Clonality	Polyclonal
Applications	WB	Conjugation	Unconjugated
Form / Buffer	Liquid in 0.42% Potassium phosphate, 0.87% Sodium chloride, pH 7.3, 30% glycerol, and 0.01% sodium azide.		Storage at -20°C

BACKGROUND

Negative regulator of the mTORC1 and mTORC2 complexes: inhibits the protein kinase activity of MTOR, thereby inactivating both complexes . DEPTOR inhibits mTORC1 and mTORC2 to induce autophagy . In contrast to AKT1S1/PRAS40, only partially inhibits mTORC1 activity .

APPLICATION

To ensure optimal assay performance, AREX recommends conducting reagent titration tailored to each testing system for optimal detection results.

WB	1:500 - 1:2000
----	----------------

*Results are sample-specific. Please refer to your local assay conditions and test parameters for reference.

PRODUCT OVERVIEW

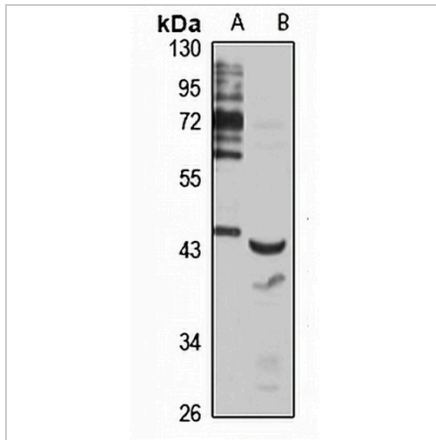
Description	Rabbit polyclonal antibody to DEPTOR
Specificity	Recognizes endogenous levels of DEPTOR protein
Antibody Type	Primary antibody
Immunogen	Recombinant fusion protein of human DEPTOR. The exact sequence is proprietary.
Purification	The antibody was purified by immunogen affinity chromatography.
Molecular Weight	Predicted: 34; Observed: 48 kD
Form/Buffer	Liquid in 0.42% Potassium phosphate, 0.87% Sodium chloride, pH 7.3, 30% glycerol, and 0.01% sodium azide.
Alternative Names	DEPDC6; DEP domain-containing mTOR-interacting protein; DEP domain-containing protein 6
Gene Symbol	DEPTOR
Entrez Gene	64798(Human); 97998(Mouse)
SwissProt	Q8TB45(Human); Q570Y9(Mouse)

*AREX continuously optimizes our products. Webpage content may not reflect the latest updates. For inquiries, please contact info@arexbio.com or your local distributor.

*Clone Number, Reactivity, Source/Host and Clonality can be found in the product name and Key Features section above.

DATASHEET**DEPTOR Rabbit Polyclonal Antibody**

CAT. NO. APA15440

DATA

Western blot analysis of DEPTOR expression in MCF7 (A), mouse kidney (B) whole cell lysates. (Predicted band size: 34; 46 kD; Observed band size: 48 kD)

STORAGE

Store at 4°C short term. For long term storage, store at -20°C, avoiding freeze/thaw cycles.

NOTE

For Research Use Only. Not for diagnostic, therapeutics, prophylactic or in vivo use.