

DATASHEET

Derlin 1 Rabbit Polyclonal Antibody

CAT. NO. APA15441

KEY FEATURES

Target	Derlin 1	Source / Host	Rabbit
Reactivity	Human, Mouse	Clonality	Polyclonal
Applications	WB	Conjugation	Unconjugated
Form / Buffer	Liquid in 0.42% Potassium phosphate, 0.87% Sodium chloride, pH 7.3, 30% glycerol, and 0.01% sodium azide.		Storage at-20°C

BACKGROUND

Functional component of endoplasmic reticulum-associated degradation (ERAD) for misfolded luminal proteins for misfolded luminal proteins . Forms homotetramers which encircle a large channel traversing the endoplasmic reticulum (ER) membrane . This allows the retrotranslocation of misfolded proteins from the ER into the cytosol where they are ubiquitinated and degraded by the proteasome . The channel has a lateral gate within the membrane which provides direct access to membrane proteins with no need to reenter the ER lumen first . May mediate the interaction between VCP and the misfolded protein .

APPLICATION

To ensure optimal assay performance, AREX recommends conducting reagent titration tailored to each testing system for optimal detection results.

WB	1:500 - 1:2000
----	----------------

*Results are sample-specific. Please refer to your local assay conditions and test parameters for reference.

PRODUCT OVERVIEW

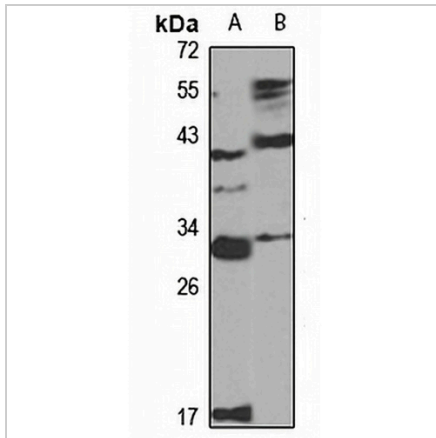
Description	Rabbit polyclonal antibody to Derlin 1
Specificity	Recognizes endogenous levels of Derlin 1 protein
Antibody Type	Primary antibody
Immunogen	Recombinant fusion protein of human Derlin 1. The exact sequence is proprietary.
Purification	The antibody was purified by immunogen affinity chromatography.
Molecular Weight	Predicted: 26; Observed: 29 kD
Form/Buffer	Liquid in 0.42% Potassium phosphate, 0.87% Sodium chloride, pH 7.3, 30% glycerol, and 0.01% sodium azide.
Alternative Names	DER1; Derlin-1; Degradation in endoplasmic reticulum protein 1; DERtrin-1; Der1-like protein 1
Gene Symbol	DERL1
Entrez Gene	79139(Human); 67819(Mouse)
SwissProt	Q9BUN8(Human); Q99J56(Mouse)

*AREX continuously optimizes our products. Webpage content may not reflect the latest updates. For inquiries, please contact info@arexbio.com or your local distributor.

*Clone Number, Reactivity, Source/Host and Clonality can be found in the product name and Key Features section above.

DATASHEET**Derlin 1 Rabbit Polyclonal Antibody**

CAT. NO. APA15441

DATA

Western blot analysis of Derlin 1 expression in MCF7 (A), mouse liver (B) whole cell lysates. (Predicted band size: 26; 28 kD; Observed band size: 29 kD)

STORAGE

Store at 4°C short term. For long term storage, store at -20°C, avoiding freeze/thaw cycles.

NOTE

For Research Use Only. Not for diagnostic, therapeutics, prophylactic or in vivo use.