

DATASHEET

DESI2 Rabbit Polyclonal Antibody

CAT. NO. APA15442

KEY FEATURES

Target	DESI2	Source / Host	Rabbit
Reactivity	Human, Mouse, Rat	Clonality	Polyclonal
Applications	WB	Conjugation	Unconjugated
Form / Buffer	Liquid in 0.42% Potassium phosphate, 0.87% Sodium chloride, pH 7.3, 30% glycerol, and 0.01% sodium azide.		Storage at -20°C

BACKGROUND

Has deubiquitinating activity towards 'Lys-48'- and 'Lys-63'-linked polyubiquitin chains. Deubiquitinates 'Lys-48'-linked polyubiquitination of RPS7 leading to its stabilization . Exhibits palmitoyl protein thioesterase (S-depalmitoylation) activity towards synthetic substrates 4-methylumbelliferyl-6-S-palmitoyl-beta-D-glucopyranoside and S-depalmitoylation probe 5 (DPP-5)

APPLICATION

To ensure optimal assay performance, AREX recommends conducting reagent titration tailored to each testing system for optimal detection results.

WB	1:500 - 1:2000
----	----------------

*Results are sample-specific. Please refer to your local assay conditions and test parameters for reference.

PRODUCT OVERVIEW

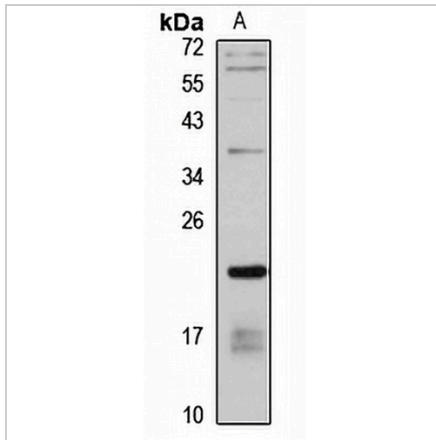
Description	Rabbit polyclonal antibody to DESI2
Specificity	Recognizes endogenous levels of DESI2 protein
Antibody Type	Primary antibody
Immunogen	Recombinant fusion protein of human DESI2. The exact sequence is proprietary.
Purification	The antibody was purified by immunogen affinity chromatography.
Molecular Weight	Predicted: 17; Observed: 21 kD
Form/Buffer	Liquid in 0.42% Potassium phosphate, 0.87% Sodium chloride, pH 7.3, 30% glycerol, and 0.01% sodium azide.
Alternative Names	C1orf121; FAM152A; PPPDE1; Desumoylating isopeptidase 2; DeSI-2; PPPDE peptidase domain-containing protein 1; Protein FAM152A
Gene Symbol	DESI2
Entrez Gene	51029(Human); 78825(Mouse); 289277(Rat)
SwissProt	Q9BSY9(Human); Q9D291(Mouse); Q5XIT6(Rat)

*AREX continuously optimizes our products. Webpage content may not reflect the latest updates. For inquiries, please contact info@arexbio.com or your local distributor.

*Clone Number, Reactivity, Source/Host and Clonality can be found in the product name and Key Features section above.

DATASHEET**DESI2 Rabbit Polyclonal Antibody**

CAT. NO. APA15442

DATA

Western blot analysis of DESI2 expression in A549 (A) whole cell lysates. (Predicted band size: 17; 21 kD; Observed band size: 21 kD)

STORAGE

Store at 4°C short term. For long term storage, store at -20°C, avoiding freeze/thaw cycles.

NOTE

For Research Use Only. Not for diagnostic, therapeutics, prophylactic or in vivo use.