

DATASHEET

DGCR14 Rabbit Polyclonal Antibody

CAT. NO. APA15444

KEY FEATURES

Target	DGCR14	Source / Host	Rabbit
Reactivity	Human, Mouse	Clonality	Polyclonal
Applications	WB	Conjugation	Unconjugated
Form / Buffer	Liquid in 0.42% Potassium phosphate, 0.87% Sodium chloride, pH 7.3, 30% glycerol, and 0.01% sodium azide.		Storage at -20°C

BACKGROUND

May be involved in pre-mRNA splicing.

APPLICATION

To ensure optimal assay performance, AREX recommends conducting reagent titration tailored to each testing system for optimal detection results.

WB	1:500 - 1:2000
----	----------------

*Results are sample-specific. Please refer to your local assay conditions and test parameters for reference.

PRODUCT OVERVIEW

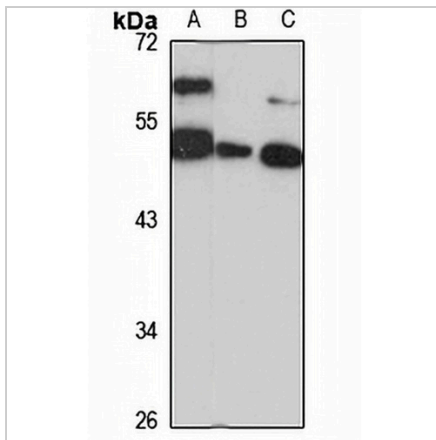
Description	Rabbit polyclonal antibody to DGCR14
Specificity	Recognizes endogenous levels of DGCR14 protein
Antibody Type	Primary antibody
Immunogen	Recombinant fusion protein of human DGCR14. The exact sequence is proprietary.
Purification	The antibody was purified by immunogen affinity chromatography.
Molecular Weight	Predicted: 52 kD; Observed: 53 kD
Form/Buffer	Liquid in 0.42% Potassium phosphate, 0.87% Sodium chloride, pH 7.3, 30% glycerol, and 0.01% sodium azide.
Alternative Names	DGCR13; DGSH; DGSI; ES2; Protein DGCR14; DiGeorge syndrome critical region 13; DiGeorge syndrome critical region 14; DiGeorge syndrome protein H; DGS-H; Protein ES2
Gene Symbol	DGCR14
Entrez Gene	8220(Human); 27886(Mouse)
SwissProt	Q96DF8(Human); O70279(Mouse)

*AREX continuously optimizes our products. Webpage content may not reflect the latest updates. For inquiries, please contact info@arexbio.com or your local distributor.

*Clone Number, Reactivity, Source/Host and Clonality can be found in the product name and Key Features section above.

DATASHEET**DGCR14 Rabbit Polyclonal Antibody**

CAT. NO. APA15444

DATA

Western blot analysis of DGCR14 expression in A549 (A), NIH3T3 (B), mouse testis (C) whole cell lysates. (Predicted band size: 52 kD; Observed band size: 53 kD)

STORAGE

Store at 4°C short term. For long term storage, store at -20°C, avoiding freeze/thaw cycles.

NOTE

For Research Use Only. Not for diagnostic, therapeutics, prophylactic or in vivo use.