

DATASHEET

DHDDS Rabbit Polyclonal Antibody

CAT. NO. APA15449

KEY FEATURES

Target	DHDDS	Source / Host	Rabbit
Reactivity	Human, Mouse, Rat	Clonality	Polyclonal
Applications	WB	Conjugation	Unconjugated
Form / Buffer	Liquid in 0.42% Potassium phosphate, 0.87% Sodium chloride, pH 7.3, 30% glycerol, and 0.01% sodium azide.		Storage at-20°C

BACKGROUND

With NUS1, forms the dehydrololichyl diphosphate synthase (DDS) complex, an essential component of the dolichol monophosphate (Dol-P) biosynthetic machinery complex, an essential component of the dolichol monophosphate (Dol-P) biosynthetic machinery . Both subunits contribute to enzymatic activity, i.e. condensation of multiple copies of isopentenyl pyrophosphate (IPP) to farnesyl pyrophosphate (FPP) to produce dehydrololichyl diphosphate (Dedol-PP), a precursor of dolichol phosphate which is utilized as a sugar carrier in protein glycosylation in the endoplasmic reticulum (ER) . Synthesizes long-chain polyprenols, mostly of C95 and C100 chain length . Regulates the glycosylation and stability of nascent NPC2, thereby promoting trafficking of LDL-derived cholesterol .

APPLICATION

To ensure optimal assay performance, AREX recommends conducting reagent titration tailored to each testing system for optimal detection results.

WB	1:500 - 1:2000
----	----------------

*Results are sample-specific. Please refer to your local assay conditions and test parameters for reference.

PRODUCT OVERVIEW

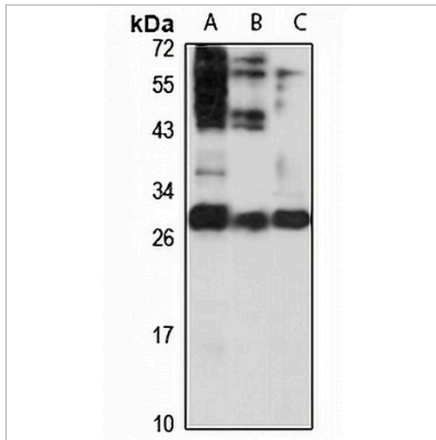
Description	Rabbit polyclonal antibody to DHDDS
Specificity	Recognizes endogenous levels of DHDDS protein
Antibody Type	Primary antibody
Immunogen	Recombinant fusion protein of human DHDDS. The exact sequence is proprietary.
Purification	The antibody was purified by immunogen affinity chromatography.
Molecular Weight	Predicted: 34; Observed: 30 kD
Form/Buffer	Liquid in 0.42% Potassium phosphate, 0.87% Sodium chloride, pH 7.3, 30% glycerol, and 0.01% sodium azide.
Alternative Names	HDS; Dehydrololichyl diphosphate synthase; Dedol-PP synthase; Cis-isoprenyltransferase; CIT; Cis-IPase; Epididymis tissue protein Li 189m
Gene Symbol	DHDDS
Entrez Gene	79947(Human); 67422(Mouse)
SwissProt	Q86SQ9(Human); Q99KU1(Mouse)

*AREX continuously optimizes our products. Webpage content may not reflect the latest updates. For inquiries, please contact info@arexbio.com or your local distributor.

*Clone Number, Reactivity, Source/Host and Clonality can be found in the product name and Key Features section above.

DATASHEET**DHDDS Rabbit Polyclonal Antibody**

CAT. NO. APA15449

DATA

Western blot analysis of DHDDS expression in HEK293T (A), mouse testis (B), rat thymus (C) whole cell lysates. (Predicted band size: 34; 38 kD; Observed band size: 30 kD)

STORAGE

Store at 4°C short term. For long term storage, store at -20°C, avoiding freeze/thaw cycles.

NOTE

For Research Use Only. Not for diagnostic, therapeutics, prophylactic or in vivo use.