

DATASHEET

DHH Rabbit Polyclonal Antibody

CAT. NO. APA15451

KEY FEATURES

Target	DHH	Source / Host	Rabbit
Reactivity	Human, Mouse, Rat	Clonality	Polyclonal
Applications	WB	Conjugation	Unconjugated
Form / Buffer	Liquid in 0.42% Potassium phosphate, 0.87% Sodium chloride, pH 7.3, 30% glycerol, and 0.01% sodium azide.		Storage at -20°C

BACKGROUND

The C-terminal part of the desert hedgehog protein precursor displays an autoproteolysis and a cholesterol transferase activity. Both activities result in the cleavage of the full-length protein into two parts (N-product and C-product) followed by the covalent attachment of a cholesterol moiety to the C-terminal of the newly generated N-product (DHH-N). Both activities occur in the endoplasmic reticulum. Once cleaved, the C-product is degraded in the endoplasmic reticulum. Functions in cell-cell mediated juxtacrine signaling followed by the covalent attachment of a cholesterol moiety to the C-terminal of the newly generated N-product (DHH-N). Both activities occur in the endoplasmic reticulum. Once cleaved, the C-product is degraded in the endoplasmic reticulum.

APPLICATION

To ensure optimal assay performance, AREX recommends conducting reagent titration tailored to each testing system for optimal detection results.

WB	1:500 - 1:2000
----	----------------

*Results are sample-specific. Please refer to your local assay conditions and test parameters for reference.

PRODUCT OVERVIEW

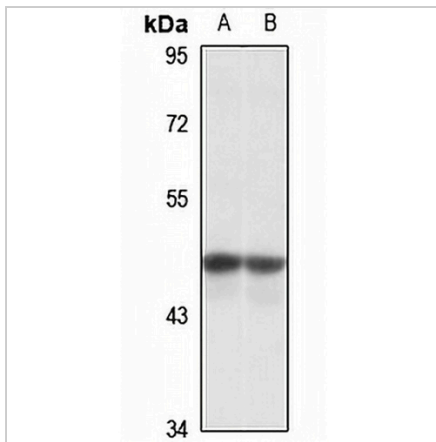
Description	Rabbit polyclonal antibody to DHH
Specificity	Recognizes endogenous levels of DHH protein
Antibody Type	Primary antibody
Immunogen	Recombinant fusion protein of human DHH. The exact sequence is proprietary.
Purification	The antibody was purified by immunogen affinity chromatography.
Molecular Weight	Predicted: 43 kD; Observed: 44 kD
Form/Buffer	Liquid in 0.42% Potassium phosphate, 0.87% Sodium chloride, pH 7.3, 30% glycerol, and 0.01% sodium azide.
Alternative Names	Desert hedgehog protein; DHH; HHG-3
Gene Symbol	DHH
Entrez Gene	50846(Human); 13363(Mouse)
SwissProt	O43323(Human); Q61488(Mouse)

*AREX continuously optimizes our products. Webpage content may not reflect the latest updates. For inquiries, please contact info@arexbio.com or your local distributor.

*Clone Number, Reactivity, Source/Host and Clonality can be found in the product name and Key Features section above.

DATASHEET**DHH Rabbit Polyclonal Antibody**

CAT. NO. APA15451

DATA

Western blot analysis of DHH expression in mouse skeletal muscle (A), rat skeletal muscle (B) whole cell lysates. (Predicted band size: 43 kD; Observed band size: 44 kD)

STORAGE

Store at 4°C short term. For long term storage, store at -20°C, avoiding freeze/thaw cycles.

NOTE

For Research Use Only. Not for diagnostic, therapeutics, prophylactic or in vivo use.