

**DATASHEET**

**DISP1 Rabbit Polyclonal Antibody**

CAT. NO. APA15459

**KEY FEATURES**

Target	DISP1	Source / Host	Rabbit
Reactivity	Human, Mouse	Clonality	Polyclonal
Applications	WB	Conjugation	Unconjugated
Form / Buffer	Liquid in 0.42% Potassium phosphate, 0.87% Sodium chloride, pH 7.3, 30% glycerol, and 0.01% sodium azide.		Storage at -20°C

**BACKGROUND**

Functions in hedgehog (Hh) signaling. Regulates the release and extracellular accumulation of cholesterol-modified hedgehog proteins and is hence required for effective production of the Hh signal . Synergizes with SCUBE2 to cause an increase in SHH secretion signaling. Regulates the release and extracellular accumulation of cholesterol-modified hedgehog proteins and is hence required for effective production of the Hh signal . Synergizes with SCUBE2 to cause an increase in SHH secretion .

**APPLICATION**

To ensure optimal assay performance, AREX recommends conducting reagent titration tailored to each testing system for optimal detection results.

WB	1:500 - 1:2000
----	----------------

\*Results are sample-specific. Please refer to your local assay conditions and test parameters for reference.

**PRODUCT OVERVIEW**

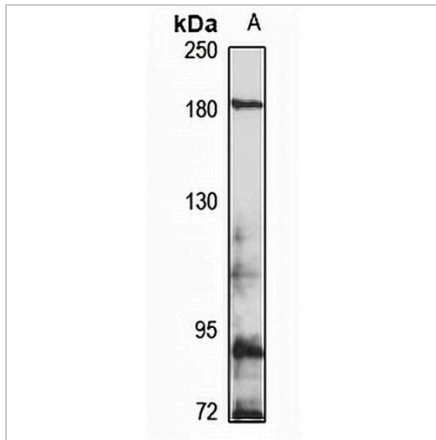
Description	Rabbit polyclonal antibody to DISP1
Specificity	Recognizes endogenous levels of DISP1 protein
Antibody Type	Primary antibody
Immunogen	Recombinant fusion protein of human DISP1. The exact sequence is proprietary.
Purification	The antibody was purified by immunogen affinity chromatography.
Molecular Weight	Predicted: 170 kD; Observed: 180 kD
Form/Buffer	Liquid in 0.42% Potassium phosphate, 0.87% Sodium chloride, pH 7.3, 30% glycerol, and 0.01% sodium azide.
Alternative Names	DISPA; Protein dispatched homolog 1
Gene Symbol	DISP1
Entrez Gene	84976(Human); 68897(Mouse)
SwissProt	Q96F81(Human); Q3TDN0(Mouse)

\*AREX continuously optimizes our products. Webpage content may not reflect the latest updates. For inquiries, please contact [info@arexbio.com](mailto:info@arexbio.com) or your local distributor.

\*Clone Number, Reactivity, Source/Host and Clonality can be found in the product name and Key Features section above.

**DATASHEET****DISP1 Rabbit Polyclonal Antibody**

CAT. NO. APA15459

**DATA**

Western blot analysis of DISP1 expression in HeLa (A) whole cell lysates. (Predicted band size: 170 kD; Observed band size: 180 kD)

**STORAGE**

Store at 4°C short term. For long term storage, store at -20°C, avoiding freeze/thaw cycles.

**NOTE**

For Research Use Only. Not for diagnostic, therapeutics, prophylactic or in vivo use.