

DATASHEET

DIXDC1 Rabbit Polyclonal Antibody

CAT. NO. APA15460

KEY FEATURES

Target	DIXDC1	Source / Host	Rabbit
Reactivity	Human, Mouse, Rat	Clonality	Polyclonal
Applications	WB	Conjugation	Unconjugated
Form / Buffer	Liquid in 0.42% Potassium phosphate, 0.87% Sodium chloride, pH 7.3, 30% glycerol, and 0.01% sodium azide.		Storage at -20°C

BACKGROUND

Positive effector of the Wnt signaling pathway; activates WNT3A signaling via DVL2. Regulates JNK activation by AXIN1 and DVL2.

APPLICATION

To ensure optimal assay performance, AREX recommends conducting reagent titration tailored to each testing system for optimal detection results.

WB	1:500 - 1:2000
----	----------------

*Results are sample-specific. Please refer to your local assay conditions and test parameters for reference.

PRODUCT OVERVIEW

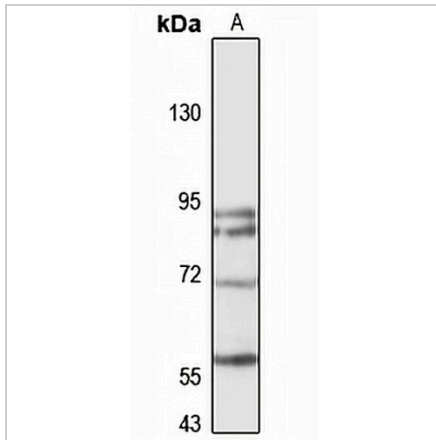
Description	Rabbit polyclonal antibody to DIXDC1
Specificity	Recognizes endogenous levels of DIXDC1 protein
Antibody Type	Primary antibody
Immunogen	Recombinant fusion protein of human DIXDC1. The exact sequence is proprietary.
Purification	The antibody was purified by immunogen affinity chromatography.
Molecular Weight	Predicted: 24; Observed: 70 kD
Form/Buffer	Liquid in 0.42% Potassium phosphate, 0.87% Sodium chloride, pH 7.3, 30% glycerol, and 0.01% sodium azide.
Alternative Names	CCD1; KIAA1735; Dixin; Coiled-coil protein DIX1; Coiled-coil-DIX1; DIX domain-containing protein 1
Gene Symbol	DIXDC1
Entrez Gene	85458(Human); 330938(Mouse); 363062(Rat)
SwissProt	Q155Q3(Human); Q80Y83(Mouse); Q2VUH7(Rat)

*AREX continuously optimizes our products. Webpage content may not reflect the latest updates. For inquiries, please contact info@arexbio.com or your local distributor.

*Clone Number, Reactivity, Source/Host and Clonality can be found in the product name and Key Features section above.

DATASHEET**DIXDC1 Rabbit Polyclonal Antibody**

CAT. NO. APA15460

DATA

Western blot analysis of DIXDC1 expression in HEK293T (A) whole cell lysates. (Predicted band size: 24; 53; 77 kD; Observed band size: 70 kD)

STORAGE

Store at 4°C short term. For long term storage, store at -20°C, avoiding freeze/thaw cycles.

NOTE

For Research Use Only. Not for diagnostic, therapeutics, prophylactic or in vivo use.