

DATASHEET

DNASE1L1 Rabbit Polyclonal Antibody

CAT. NO. APA15473

KEY FEATURES

Target	DNASE1L1	Source / Host	Rabbit
Reactivity	Human, Mouse, Rat	Clonality	Polyclonal
Applications	WB	Conjugation	Unconjugated
Form / Buffer	Liquid in 0.42% Potassium phosphate, 0.87% Sodium chloride, pH 7.3, 30% glycerol, and 0.01% sodium azide.		Storage at -20°C

BACKGROUND

This gene encodes a deoxyribonuclease protein that shows high sequence similarity to DNase I. The encoded protein is localized to the endoplasmic reticulum and modified by N-linked glycosylation. Alternate transcriptional splice variants encoding the same protein have been observed.

APPLICATION

To ensure optimal assay performance, AREX recommends conducting reagent titration tailored to each testing system for optimal detection results.

WB	1:500 - 1:1000
----	----------------

*Results are sample-specific. Please refer to your local assay conditions and test parameters for reference.

PRODUCT OVERVIEW

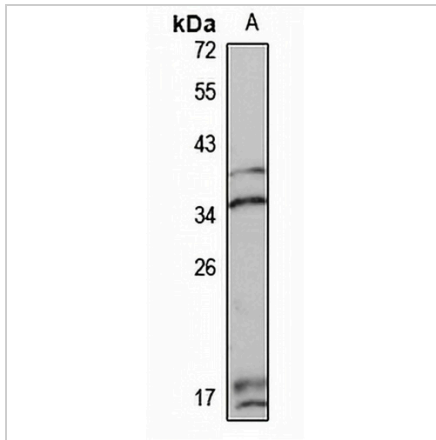
Description	Rabbit polyclonal antibody to DNASE1L1
Specificity	Recognizes endogenous levels of DNASE1L1 protein
Antibody Type	Primary antibody
Immunogen	Recombinant fusion protein of human DNASE1L1. The exact sequence is proprietary.
Purification	The antibody was purified by immunogen affinity chromatography.
Molecular Weight	Predicted: 33 kD; Observed: 36 kD
Form/Buffer	Liquid in 0.42% Potassium phosphate, 0.87% Sodium chloride, pH 7.3, 30% glycerol, and 0.01% sodium azide.
Alternative Names	DNAS1L1; DNL1L; Deoxyribonuclease-1-like 1; DNase X; Deoxyribonuclease I-like 1; DNase I-like 1; Muscle-specific DNase I-like; XIB
Gene Symbol	DNASE1L1
Entrez Gene	1774(Human); 69537(Mouse); 363522(Rat)
SwissProt	P49184(Human); Q9D7J6(Mouse); Q2QDE7(Rat)

*AREX continuously optimizes our products. Webpage content may not reflect the latest updates. For inquiries, please contact info@arexbio.com or your local distributor.

*Clone Number, Reactivity, Source/Host and Clonality can be found in the product name and Key Features section above.

DATASHEET**DNASE1L1 Rabbit Polyclonal Antibody**

CAT. NO. APA15473

DATA

Western blot analysis of DNASE1L1 expression in MCF7 (A) whole cell lysates. (Predicted band size: 33 kD; Observed band size: 36 kD)

STORAGE

Store at 4°C short term. For long term storage, store at -20°C, avoiding freeze/thaw cycles.

NOTE

For Research Use Only. Not for diagnostic, therapeutics, prophylactic or in vivo use.