

DATASHEET

DOCK4 Rabbit Polyclonal Antibody

CAT. NO. APA15477

KEY FEATURES

Target	DOCK4	Source / Host	Rabbit
Reactivity	Human, Mouse	Clonality	Polyclonal
Applications	WB	Conjugation	Unconjugated
Form / Buffer	Liquid in 0.42% Potassium phosphate, 0.87% Sodium chloride, pH 7.3, 30% glycerol, and 0.01% sodium azide.		Storage at -20°C

BACKGROUND

Functions as a guanine nucleotide exchange factor (GEF) that promotes the exchange of GDP to GTP, converting inactive GDP-bound small GTPases into their active GTP-bound form that promotes the exchange of GDP to GTP, converting inactive GDP-bound small GTPases into their active GTP-bound form . Involved in regulation of adherens junction between cells . Plays a role in cell migration .

APPLICATION

To ensure optimal assay performance, AREX recommends conducting reagent titration tailored to each testing system for optimal detection results.

WB	1:500 - 1:2000
----	----------------

*Results are sample-specific. Please refer to your local assay conditions and test parameters for reference.

PRODUCT OVERVIEW

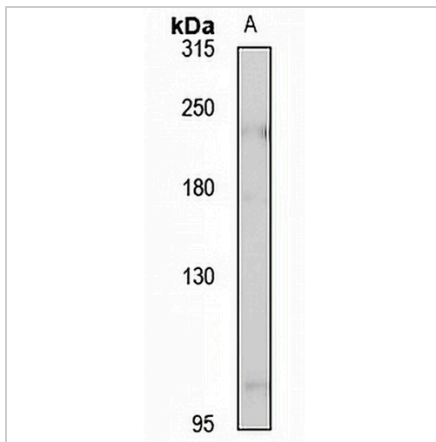
Description	Rabbit polyclonal antibody to DOCK4
Specificity	Recognizes endogenous levels of DOCK4 protein
Antibody Type	Primary antibody
Immunogen	Recombinant fusion protein of human DOCK4. The exact sequence is proprietary.
Purification	The antibody was purified by immunogen affinity chromatography.
Molecular Weight	Predicted: 29; Observed: 235 kD
Form/Buffer	Liquid in 0.42% Potassium phosphate, 0.87% Sodium chloride, pH 7.3, 30% glycerol, and 0.01% sodium azide.
Alternative Names	KIAA0716; Deducator of cytokinesis protein 4
Gene Symbol	DOCK4
Entrez Gene	9732(Human); 238130(Mouse)
SwissProt	Q8N1I0(Human); P59764(Mouse)

*AREX continuously optimizes our products. Webpage content may not reflect the latest updates. For inquiries, please contact info@arexbio.com or your local distributor.

*Clone Number, Reactivity, Source/Host and Clonality can be found in the product name and Key Features section above.

DATASHEET**DOCK4 Rabbit Polyclonal Antibody**

CAT. NO. APA15477

DATA

Western blot analysis of DOCK4 expression in DU145 (A) whole cell lysates. (Predicted band size: 29; 222; 225; 226 kD; Observed band size: 235 kD)

STORAGE

Store at 4°C short term. For long term storage, store at -20°C, avoiding freeze/thaw cycles.

NOTE

For Research Use Only. Not for diagnostic, therapeutics, prophylactic or in vivo use.