

## DATASHEET

# DPEP1 Rabbit Polyclonal Antibody

CAT. NO. APA15479

### KEY FEATURES

Target	DPEP1	Source / Host	Rabbit
Reactivity	Human, Mouse, Rat	Clonality	Polyclonal
Applications	WB	Conjugation	Unconjugated
Form / Buffer	Liquid in 0.42% Potassium phosphate, 0.87% Sodium chloride, pH 7.3, 30% glycerol, and 0.01% sodium azide.		Storage at -20°C

### BACKGROUND

Hydrolyzes a wide range of dipeptides including the conversion of leukotriene D4 to leukotriene E4 . Hydrolyzes cystinyl-bis-glycine (cys-bis-gly) formed during glutathione degradation . Also possesses beta lactamase activity and can hydrolyze the beta-lactam antibiotic imipenem .

### APPLICATION

To ensure optimal assay performance, AREX recommends conducting reagent titration tailored to each testing system for optimal detection results.

WB	1:500 - 1:2000
----	----------------

\*Results are sample-specific. Please refer to your local assay conditions and test parameters for reference.

### PRODUCT OVERVIEW

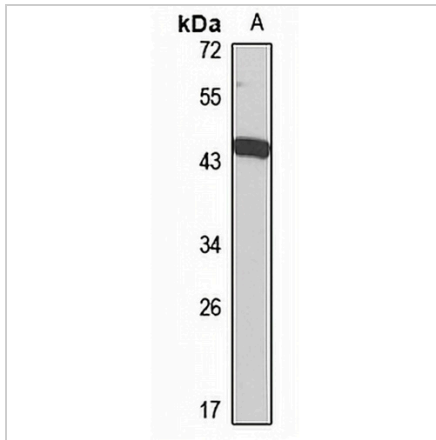
Description	Rabbit polyclonal antibody to DPEP1
Specificity	Recognizes endogenous levels of DPEP1 protein
Antibody Type	Primary antibody
Immunogen	Recombinant fusion protein of human DPEP1. The exact sequence is proprietary.
Purification	The antibody was purified by immunogen affinity chromatography.
Molecular Weight	Predicted: 45 kD; Observed: 46 kD
Form/Buffer	Liquid in 0.42% Potassium phosphate, 0.87% Sodium chloride, pH 7.3, 30% glycerol, and 0.01% sodium azide.
Alternative Names	MDP; RDP; Dipeptidase 1; Dehydropeptidase-I; Microsomal dipeptidase; Renal dipeptidase; hRDP
Gene Symbol	DPEP1
Entrez Gene	1800(Human); 13479(Mouse); 94199(Rat)
SwissProt	P16444(Human); P31428(Mouse); P31430(Rat)

\*AREX continuously optimizes our products. Webpage content may not reflect the latest updates. For inquiries, please contact [info@arexbio.com](mailto:info@arexbio.com) or your local distributor.

\*Clone Number, Reactivity, Source/Host and Clonality can be found in the product name and Key Features section above.

**DATASHEET****DPEP1 Rabbit Polyclonal Antibody**

CAT. NO. APA15479

**DATA**

Western blot analysis of DPEP1 expression in HepG2 (A) whole cell lysates. (Predicted band size: 45 kD; Observed band size: 46 kD)

**STORAGE**

Store at 4°C short term. For long term storage, store at -20°C, avoiding freeze/thaw cycles.

**NOTE**

For Research Use Only. Not for diagnostic, therapeutics, prophylactic or in vivo use.