

DATASHEET

DPEP2 Rabbit Polyclonal Antibody

CAT. NO. APA15480

KEY FEATURES

Target	DPEP2	Source / Host	Rabbit
Reactivity	Human, Mouse, Rat	Clonality	Polyclonal
Applications	WB	Conjugation	Unconjugated
Form / Buffer	Liquid in 0.42% Potassium phosphate, 0.87% Sodium chloride, pH 7.3, 30% glycerol, and 0.01% sodium azide.		Storage at -20°C

BACKGROUND

Dipeptidase that hydrolyzes leukotriene D4 (LTD4) into leukotriene E4 (LTE4) into leukotriene E4 (LTE4) . Hydrolyzes cystinyl-bis-glycine .

APPLICATION

To ensure optimal assay performance, AREX recommends conducting reagent titration tailored to each testing system for optimal detection results.

WB	1:500 - 1:2000
----	----------------

*Results are sample-specific. Please refer to your local assay conditions and test parameters for reference.

PRODUCT OVERVIEW

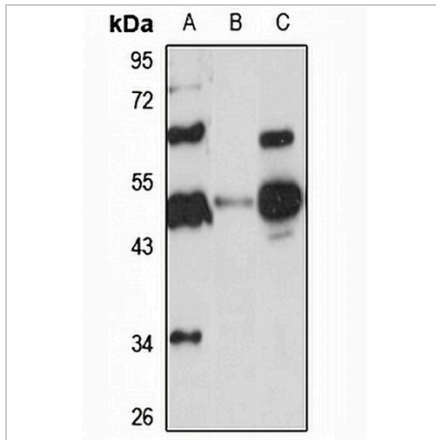
Description	Rabbit polyclonal antibody to DPEP2
Specificity	Recognizes endogenous levels of DPEP2 protein
Antibody Type	Primary antibody
Immunogen	Recombinant fusion protein of human DPEP2. The exact sequence is proprietary.
Purification	The antibody was purified by immunogen affinity chromatography.
Molecular Weight	Predicted: 43; Observed: 53 kD
Form/Buffer	Liquid in 0.42% Potassium phosphate, 0.87% Sodium chloride, pH 7.3, 30% glycerol, and 0.01% sodium azide.
Alternative Names	Dipeptidase 2
Gene Symbol	DPEP2
Entrez Gene	64174(Human); 319446(Mouse); 291984(Rat)
SwissProt	Q9H4A9(Human); Q8C255(Mouse); Q5M872(Rat)

*AREX continuously optimizes our products. Webpage content may not reflect the latest updates. For inquiries, please contact info@arexbio.com or your local distributor.

*Clone Number, Reactivity, Source/Host and Clonality can be found in the product name and Key Features section above.

DATASHEET**DPEP2 Rabbit Polyclonal Antibody**

CAT. NO. APA15480

DATA

Western blot analysis of DPEP2 expression in HeLa (A), mouse spleen (B), rat spleen (C) whole cell lysates. (Predicted band size: 43; 53 kD; Observed band size: 53 kD)

STORAGE

Store at 4°C short term. For long term storage, store at -20°C, avoiding freeze/thaw cycles.

NOTE

For Research Use Only. Not for diagnostic, therapeutics, prophylactic or in vivo use.