

**DATASHEET**

**DPP6 Rabbit Polyclonal Antibody**

CAT. NO. APA15481

**KEY FEATURES**

Target	DPP6	Source / Host	Rabbit
Reactivity	Human, Mouse, Rat	Clonality	Polyclonal
Applications	WB	Conjugation	Unconjugated
Form / Buffer	Liquid in 0.42% Potassium phosphate, 0.87% Sodium chloride, pH 7.3, 30% glycerol, and 0.01% sodium azide.		Storage at -20°C

**BACKGROUND**

Promotes cell surface expression of the potassium channel KCND2 . Modulates the activity and gating characteristics of the potassium channel KCND2 . Has no dipeptidyl aminopeptidase activity .

**APPLICATION**

To ensure optimal assay performance, AREX recommends conducting reagent titration tailored to each testing system for optimal detection results.

WB	1:500 - 1:2000
----	----------------

\*Results are sample-specific. Please refer to your local assay conditions and test parameters for reference.

**PRODUCT OVERVIEW**

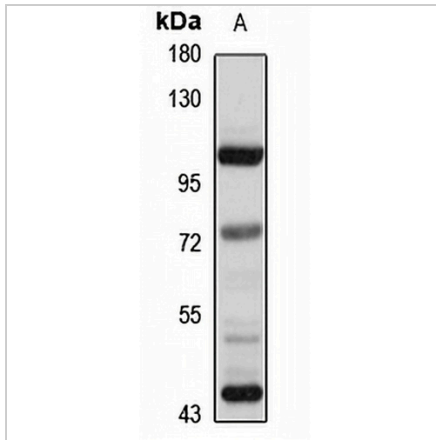
Description	Rabbit polyclonal antibody to DPP6
Specificity	Recognizes endogenous levels of DPP6 protein
Antibody Type	Primary antibody
Immunogen	Recombinant fusion protein of human DPP6. The exact sequence is proprietary.
Purification	The antibody was purified by immunogen affinity chromatography.
Molecular Weight	Predicted: 91; Observed: 105 kD
Form/Buffer	Liquid in 0.42% Potassium phosphate, 0.87% Sodium chloride, pH 7.3, 30% glycerol, and 0.01% sodium azide.
Alternative Names	Dipeptidyl aminopeptidase-like protein 6; DPPX; Dipeptidyl aminopeptidase-related protein; Dipeptidyl peptidase 6; Dipeptidyl peptidase IV-like protein; Dipeptidyl peptidase VI; DPP VI
Gene Symbol	DPP6
Entrez Gene	1804(Human); 13483(Mouse); 29272(Rat)
SwissProt	P42658(Human); Q9Z218(Mouse); P46101(Rat)

\*AREX continuously optimizes our products. Webpage content may not reflect the latest updates. For inquiries, please contact [info@arexbio.com](mailto:info@arexbio.com) or your local distributor.

\*Clone Number, Reactivity, Source/Host and Clonality can be found in the product name and Key Features section above.

**DATASHEET****DPP6 Rabbit Polyclonal Antibody**

CAT. NO. APA15481

**DATA**

Western blot analysis of DPP6 expression in HEK293T (A) whole cell lysates. (Predicted band size: 91; 97 kD; Observed band size: 105 kD)

**STORAGE**

Store at 4°C short term. For long term storage, store at -20°C, avoiding freeze/thaw cycles.

**NOTE**

For Research Use Only. Not for diagnostic, therapeutics, prophylactic or in vivo use.