

DATASHEET

CRMP-4 Rabbit Polyclonal Antibody

CAT. NO. APA15486

KEY FEATURES

Target	CRMP-4	Source / Host	Rabbit
Reactivity	Human, Mouse, Rat	Clonality	Polyclonal
Applications	WB	Conjugation	Unconjugated
Form / Buffer	Liquid in 0.42% Potassium phosphate, 0.87% Sodium chloride, pH 7.3, 30% glycerol, and 0.01% sodium azide.		Storage at -20°C

BACKGROUND

Necessary for signaling by class 3 semaphorins and subsequent remodeling of the cytoskeleton. Plays a role in axon guidance, neuronal growth cone collapse and cell migration .

APPLICATION

To ensure optimal assay performance, AREX recommends conducting reagent titration tailored to each testing system for optimal detection results.

WB	1:500 - 1:2000
----	----------------

*Results are sample-specific. Please refer to your local assay conditions and test parameters for reference.

PRODUCT OVERVIEW

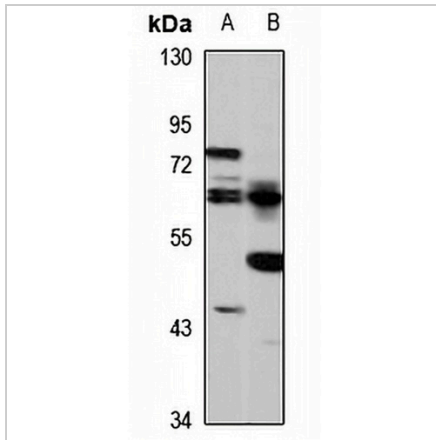
Description	Rabbit polyclonal antibody to CRMP-4
Specificity	Recognizes endogenous levels of CRMP-4 protein
Antibody Type	Primary antibody
Immunogen	Recombinant fusion protein of human CRMP-4. The exact sequence is proprietary.
Purification	The antibody was purified by immunogen affinity chromatography.
Molecular Weight	Predicted: 61; Observed: 61; 73 kD
Form/Buffer	Liquid in 0.42% Potassium phosphate, 0.87% Sodium chloride, pH 7.3, 30% glycerol, and 0.01% sodium azide.
Alternative Names	CRMP4; DRP3; ULIP; ULIP1; Dihydropyrimidinase-related protein 3; DRP-3; Collapsin response mediator protein 4; CRMP-4; Unc-33-like phosphoprotein 1; ULIP-1
Gene Symbol	DPYSL3
Entrez Gene	1809(Human); 22240(Mouse); 25418(Rat)
SwissProt	Q14195(Human); Q62188(Mouse); Q62952(Rat)

*AREX continuously optimizes our products. Webpage content may not reflect the latest updates. For inquiries, please contact info@arexbio.com or your local distributor.

*Clone Number, Reactivity, Source/Host and Clonality can be found in the product name and Key Features section above.

DATASHEET**CRMP-4 Rabbit Polyclonal Antibody**

CAT. NO. APA15486

DATA

Western blot analysis of CRMP-4 expression in LO2 (A), mouse heart (B) whole cell lysates.
(Predicted band size: 61; 73 kD; Observed band size: 61; 73 kD)

STORAGE

Store at 4°C short term. For long term storage, store at -20°C, avoiding freeze/thaw cycles.

NOTE

For Research Use Only. Not for diagnostic, therapeutics, prophylactic or in vivo use.