

**DATASHEET**

**CRMP-5 Rabbit Polyclonal Antibody**

CAT. NO. APA15487

**KEY FEATURES**

Target	CRMP-5	Source / Host	Rabbit
Reactivity	Human, Mouse, Rat	Clonality	Polyclonal
Applications	WB	Conjugation	Unconjugated
Form / Buffer	Liquid in 0.42% Potassium phosphate, 0.87% Sodium chloride, pH 7.3, 30% glycerol, and 0.01% sodium azide.		Storage at -20°C

**BACKGROUND**

Involved in the negative regulation of dendrite outgrowth.

**APPLICATION**

To ensure optimal assay performance, AREX recommends conducting reagent titration tailored to each testing system for optimal detection results.

WB	1:500 - 1:2000
----	----------------

\*Results are sample-specific. Please refer to your local assay conditions and test parameters for reference.

**PRODUCT OVERVIEW**

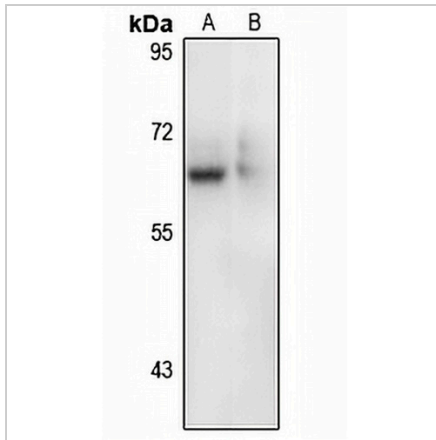
Description	Rabbit polyclonal antibody to CRMP-5
Specificity	Recognizes endogenous levels of CRMP-5 protein
Antibody Type	Primary antibody
Immunogen	Recombinant fusion protein of human CRMP-5. The exact sequence is proprietary.
Purification	The antibody was purified by immunogen affinity chromatography.
Molecular Weight	Predicted: 61 kD; Observed: 61 kD
Form/Buffer	Liquid in 0.42% Potassium phosphate, 0.87% Sodium chloride, pH 7.3, 30% glycerol, and 0.01% sodium azide.
Alternative Names	CRMP5; ULIP6; Dihydropyrimidinase-related protein 5; DRP-5; CRMP3-associated molecule; CRAM; Collapsin response mediator protein 5; CRMP-5; UNC33-like phosphoprotein 6; ULIP-6
Gene Symbol	DPYSL5
Entrez Gene	56896(Human); 65254(Mouse); 100910964; 65208(Rat)
SwissProt	Q9BPU6(Human); Q9EQF6(Mouse); Q9JHU0(Rat)

\*AREX continuously optimizes our products. Webpage content may not reflect the latest updates. For inquiries, please contact [info@arexbio.com](mailto:info@arexbio.com) or your local distributor.

\*Clone Number, Reactivity, Source/Host and Clonality can be found in the product name and Key Features section above.

**DATASHEET****CRMP-5 Rabbit Polyclonal Antibody**

CAT. NO. APA15487

**DATA**

Western blot analysis of CRMP-5 expression in A549 (A), rat liver (B) whole cell lysates. (Predicted band size: 61 kD; Observed band size: 61 kD)

**STORAGE**

Store at 4°C short term. For long term storage, store at -20°C, avoiding freeze/thaw cycles.

**NOTE**

For Research Use Only. Not for diagnostic, therapeutics, prophylactic or in vivo use.