

**DATASHEET**

**Dopamine Receptor D2 Rabbit Polyclonal Antibody**

CAT. NO. APA15489

**KEY FEATURES**

Target	Dopamine Receptor D2	Source / Host	Rabbit
Reactivity	Human, Mouse, Rat	Clonality	Polyclonal
Applications	WB	Conjugation	Unconjugated
Form / Buffer	Liquid in 0.42% Potassium phosphate, 0.87% Sodium chloride, pH 7.3, 30% glycerol, and 0.01% sodium azide.	Storage	at-20°C

**BACKGROUND**

Dopamine receptor whose activity is mediated by G proteins which inhibit adenylyl cyclase . Positively regulates postnatal regression of retinal hyaloid vessels via suppression of VEGFR2/KDR activity, downstream of OPN5 .

**APPLICATION**

To ensure optimal assay performance, AREX recommends conducting reagent titration tailored to each testing system for optimal detection results.

WB	1:500 - 1:2000
----	----------------

\*Results are sample-specific. Please refer to your local assay conditions and test parameters for reference.

**PRODUCT OVERVIEW**

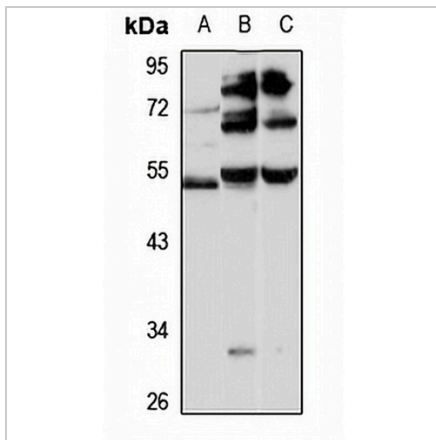
Description	Rabbit polyclonal antibody to Dopamine Receptor D2
Specificity	Recognizes endogenous levels of Dopamine Receptor D2 protein
Antibody Type	Primary antibody
Immunogen	Recombinant fusion protein of human Dopamine Receptor D2. The exact sequence is proprietary.
Purification	The antibody was purified by immunogen affinity chromatography.
Molecular Weight	Predicted: 47; Observed: 54 kD
Form/Buffer	Liquid in 0.42% Potassium phosphate, 0.87% Sodium chloride, pH 7.3, 30% glycerol, and 0.01% sodium azide.
Alternative Names	D(2) dopamine receptor; Dopamine D2 receptor
Gene Symbol	DRD2
Entrez Gene	1813(Human); 13489(Mouse); 24318(Rat)
SwissProt	P14416(Human); P61168(Mouse); P61169(Rat)

\*AREX continuously optimizes our products. Webpage content may not reflect the latest updates. For inquiries, please contact [info@arexbio.com](mailto:info@arexbio.com) or your local distributor.

\*Clone Number, Reactivity, Source/Host and Clonality can be found in the product name and Key Features section above.

**DATASHEET****Dopamine Receptor D2 Rabbit Polyclonal Antibody**

CAT. NO. APA15489

**DATA**

Western blot analysis of Dopamine Receptor D2 expression in A549 (A), mouse brain (B), rat brain (C) whole cell lysates. (Predicted band size: 47; 50 kD; Observed band size: 54 kD)

**STORAGE**

Store at 4°C short term. For long term storage, store at -20°C, avoiding freeze/thaw cycles.

**NOTE**

For Research Use Only. Not for diagnostic, therapeutics, prophylactic or in vivo use.