

DATASHEET

DRG2 Rabbit Polyclonal Antibody

CAT. NO. APA15490

KEY FEATURES

Target	DRG2	Source / Host	Rabbit
Reactivity	Human, Mouse, Rat	Clonality	Polyclonal
Applications	WB, IF/ICC	Conjugation	Unconjugated
Form / Buffer	Liquid in 0.42% Potassium phosphate, 0.87% Sodium chloride, pH 7.3, 30% glycerol, and 0.01% sodium azide.		Storage at -20°C

BACKGROUND

Catalyzes the conversion of GTP to GDP through hydrolysis of the gamma-phosphate bond in GTP. When hydroxylated at C-3 of 'Lys-21' by JMJD7, may bind to RNA and play a role in translation.

APPLICATION

To ensure optimal assay performance, AREX recommends conducting reagent titration tailored to each testing system for optimal detection results.

WB	1:500 - 1:2000
IF/ICC	1:50 - 1:200

*Results are sample-specific. Please refer to your local assay conditions and test parameters for reference.

PRODUCT OVERVIEW

Description	Rabbit polyclonal antibody to DRG2
Specificity	Recognizes endogenous levels of DRG2 protein
Antibody Type	Primary antibody
Immunogen	Recombinant fusion protein of human DRG2. The exact sequence is proprietary.
Purification	The antibody was purified by immunogen affinity chromatography.
Molecular Weight	Predicted: 40 kD; Observed: 45 kD
Form/Buffer	Liquid in 0.42% Potassium phosphate, 0.87% Sodium chloride, pH 7.3, 30% glycerol, and 0.01% sodium azide.
Alternative Names	Developmentally-regulated GTP-binding protein 2; DRG-2
Gene Symbol	DRG2
Entrez Gene	1819(Human); 13495(Mouse)
SwissProt	P55039(Human); Q9QXB9(Mouse)

*AREX continuously optimizes our products. Webpage content may not reflect the latest updates. For inquiries, please contact info@arexbio.com or your local distributor.

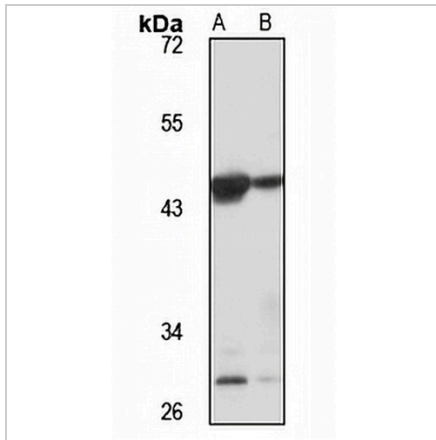
*Clone Number, Reactivity, Source/Host and Clonality can be found in the product name and Key Features section above.

DATASHEET

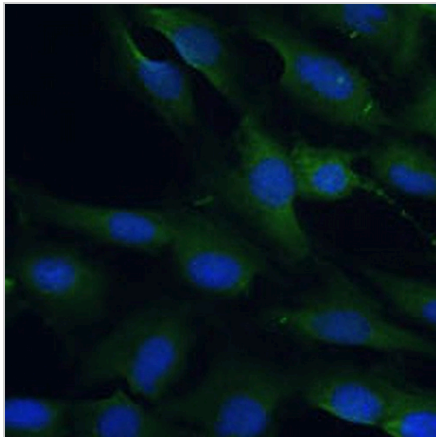
DRG2 Rabbit Polyclonal Antibody

CAT. NO. APA15490

DATA



Western blot analysis of DRG2 expression in rat heart (A), rat thymus (B) whole cell lysates. (Predicted band size: 40 kD; Observed band size: 45 kD)



Immunofluorescent analysis of DRG2 staining in C6 cells. Formalin-fixed cells were permeabilized with 0.1% Triton X-100 in TBS for 5-10 minutes and blocked with 3% BSA-PBS for 30 minutes at room temperature. Cells were probed with the primary antibody in 3% BSA-PBS and incubated overnight at 4 °C in a humidified chamber. Cells were washed with PBST and incubated with a AREX® Fluor 488 -conjugated secondary antibody (green) in PBS at room temperature in the dark. DAPI was used to stain the cell nuclei (blue).

STORAGE

Store at 4°C short term. For long term storage, store at -20°C, avoiding freeze/thaw cycles.

NOTE

For Research Use Only. Not for diagnostic, therapeutics, prophylactic or in vivo use.