

DATASHEET

Dextrin Rabbit Polyclonal Antibody

CAT. NO. APA15491

KEY FEATURES

Target	Dextrin	Source / Host	Rabbit
Reactivity	Human, Mouse, Rat	Clonality	Polyclonal
Applications	WB	Conjugation	Unconjugated
Form / Buffer	Liquid in 0.42% Potassium phosphate, 0.87% Sodium chloride, pH 7.3, 30% glycerol, and 0.01% sodium azide.	Storage	at-20°C

BACKGROUND

Actin-depolymerizing protein. Severs actin filaments (F-actin) and binds to actin monomers (G-actin). Acts in a pH-independent manner.

APPLICATION

To ensure optimal assay performance, AREX recommends conducting reagent titration tailored to each testing system for optimal detection results.

WB	1:500 - 1:2000
----	----------------

*Results are sample-specific. Please refer to your local assay conditions and test parameters for reference.

PRODUCT OVERVIEW

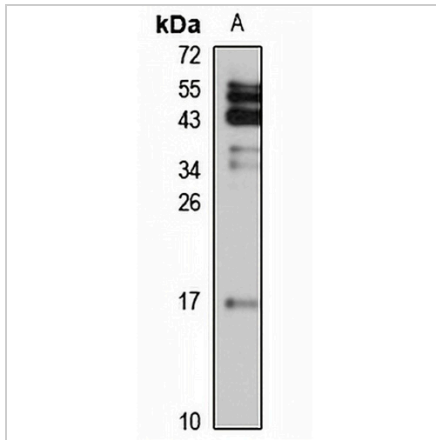
Description	Rabbit polyclonal antibody to Dextrin
Specificity	Recognizes endogenous levels of Dextrin protein
Antibody Type	Primary antibody
Immunogen	Recombinant fusion protein of human Dextrin. The exact sequence is proprietary.
Purification	The antibody was purified by immunogen affinity chromatography.
Molecular Weight	Predicted: 16; Observed: 16 kD
Form/Buffer	Liquid in 0.42% Potassium phosphate, 0.87% Sodium chloride, pH 7.3, 30% glycerol, and 0.01% sodium azide.
Alternative Names	ACTDP; DSN; Dextrin; Actin-depolymerizing factor; ADF
Gene Symbol	DSTN
Entrez Gene	11034(Human); 56431(Mouse); 502674(Rat)
SwissProt	P60981(Human); Q9R0P5(Mouse); Q7M0E3(Rat)

*AREX continuously optimizes our products. Webpage content may not reflect the latest updates. For inquiries, please contact info@arexbio.com or your local distributor.

*Clone Number, Reactivity, Source/Host and Clonality can be found in the product name and Key Features section above.

DATASHEET**Dextrin Rabbit Polyclonal Antibody**

CAT. NO. APA15491

DATA

Western blot analysis of Dextrin expression in HeLa (A) whole cell lysates. (Predicted band size: 16; 18 kD; Observed band size: 16 kD)

STORAGE

Store at 4°C short term. For long term storage, store at -20°C, avoiding freeze/thaw cycles.

NOTE

For Research Use Only. Not for diagnostic, therapeutics, prophylactic or in vivo use.