

DATASHEET

DUSP15 Rabbit Polyclonal Antibody

CAT. NO. APA15496

KEY FEATURES

Target	DUSP15	Source / Host	Rabbit
Reactivity	Human, Mouse, Rat	Clonality	Polyclonal
Applications	WB	Conjugation	Unconjugated
Form / Buffer	Liquid in 0.42% Potassium phosphate, 0.87% Sodium chloride, pH 7.3, 30% glycerol, and 0.01% sodium azide.		Storage at-20°C

BACKGROUND

May dephosphorylate MAPK13, ATF2, ERBB3, PDGFRB and SNX6 .

APPLICATION

To ensure optimal assay performance, AREX recommends conducting reagent titration tailored to each testing system for optimal detection results.

WB	1:500 - 1:2000
----	----------------

*Results are sample-specific. Please refer to your local assay conditions and test parameters for reference.

PRODUCT OVERVIEW

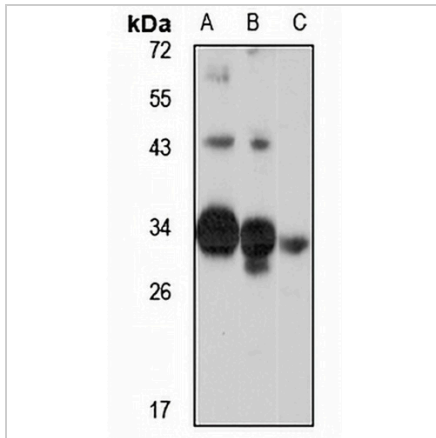
Description	Rabbit polyclonal antibody to DUSP15
Specificity	Recognizes endogenous levels of DUSP15 protein
Antibody Type	Primary antibody
Immunogen	Recombinant fusion protein of human DUSP15. The exact sequence is proprietary.
Purification	The antibody was purified by immunogen affinity chromatography.
Molecular Weight	Predicted: 14; Observed: 32 kD
Form/Buffer	Liquid in 0.42% Potassium phosphate, 0.87% Sodium chloride, pH 7.3, 30% glycerol, and 0.01% sodium azide.
Alternative Names	C20orf57; VHY; Dual specificity protein phosphatase 15; VH1-related member Y; Vaccinia virus VH1-related dual-specific protein phosphatase Y
Gene Symbol	DUSP15
Entrez Gene	128853(Human); 252864(Mouse)
SwissProt	Q9H1R2(Human); Q8R4V2(Mouse)

*AREX continuously optimizes our products. Webpage content may not reflect the latest updates. For inquiries, please contact info@arexbio.com or your local distributor.

*Clone Number, Reactivity, Source/Host and Clonality can be found in the product name and Key Features section above.

DATASHEET**DUSP15 Rabbit Polyclonal Antibody**

CAT. NO. APA15496

DATA

Western blot analysis of DUSP15 expression in A375 (A), mouse kidney (B), rat kidney (C) whole cell lysates. (Predicted band size: 14; 25; 26; 31 kD; Observed band size: 32 kD)

STORAGE

Store at 4°C short term. For long term storage, store at -20°C, avoiding freeze/thaw cycles.

NOTE

For Research Use Only. Not for diagnostic, therapeutics, prophylactic or in vivo use.