

DATASHEET

DUSP5 Rabbit Polyclonal Antibody

CAT. NO. APA15498

KEY FEATURES

Target	DUSP5	Source / Host	Rabbit
Reactivity	Human, Rat	Clonality	Polyclonal
Applications	WB	Conjugation	Unconjugated
Form / Buffer	Liquid in 0.42% Potassium phosphate, 0.87% Sodium chloride, pH 7.3, 30% glycerol, and 0.01% sodium azide.		Storage at-20°C

BACKGROUND

Dual specificity protein phosphatase; active with phosphotyrosine, phosphoserine and phosphothreonine residues. The highest relative activity is toward ERK1.

APPLICATION

To ensure optimal assay performance, AREX recommends conducting reagent titration tailored to each testing system for optimal detection results.

WB	1:500 - 1:2000
----	----------------

*Results are sample-specific. Please refer to your local assay conditions and test parameters for reference.

PRODUCT OVERVIEW

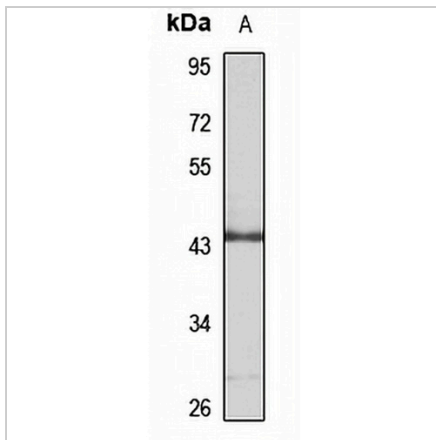
Description	Rabbit polyclonal antibody to DUSP5
Specificity	Recognizes endogenous levels of DUSP5 protein
Antibody Type	Primary antibody
Immunogen	Recombinant fusion protein of human DUSP5. The exact sequence is proprietary.
Purification	The antibody was purified by immunogen affinity chromatography.
Molecular Weight	Predicted: 42 kD; Observed: 42 kD
Form/Buffer	Liquid in 0.42% Potassium phosphate, 0.87% Sodium chloride, pH 7.3, 30% glycerol, and 0.01% sodium azide.
Alternative Names	VH3; Dual specificity protein phosphatase 5; Dual specificity protein phosphatase hVH3
Gene Symbol	DUSP5
Entrez Gene	1847(Human); 171109(Rat)
SwissProt	Q16690(Human); O54838(Rat)

*AREX continuously optimizes our products. Webpage content may not reflect the latest updates. For inquiries, please contact info@arexbio.com or your local distributor.

*Clone Number, Reactivity, Source/Host and Clonality can be found in the product name and Key Features section above.

DATASHEET**DUSP5 Rabbit Polyclonal Antibody**

CAT. NO. APA15498

DATA

Western blot analysis of DUSP5 expression in Raji (A) whole cell lysates. (Predicted band size: 42 kD; Observed band size: 42 kD)

STORAGE

Store at 4°C short term. For long term storage, store at -20°C, avoiding freeze/thaw cycles.

NOTE

For Research Use Only. Not for diagnostic, therapeutics, prophylactic or in vivo use.