

**DATASHEET**

**Dymeclin Rabbit Polyclonal Antibody**

CAT. NO. APA15501

**KEY FEATURES**

Target	Dymeclin	Source / Host	Rabbit
Reactivity	Human, Mouse, Rat	Clonality	Polyclonal
Applications	WB	Conjugation	Unconjugated
Form / Buffer	Liquid in 0.42% Potassium phosphate, 0.87% Sodium chloride, pH 7.3, 30% glycerol, and 0.01% sodium azide.		Storage at -20°C

**BACKGROUND**

Necessary for correct organization of Golgi apparatus. Involved in bone development.

**APPLICATION**

To ensure optimal assay performance, AREX recommends conducting reagent titration tailored to each testing system for optimal detection results.

WB	1:500 - 1:2000
----	----------------

\*Results are sample-specific. Please refer to your local assay conditions and test parameters for reference.

**PRODUCT OVERVIEW**

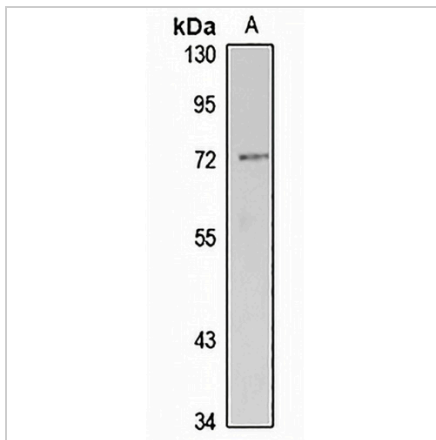
Description	Rabbit polyclonal antibody to Dymeclin
Specificity	Recognizes endogenous levels of Dymeclin protein
Antibody Type	Primary antibody
Immunogen	Recombinant fusion protein of human Dymeclin. The exact sequence is proprietary.
Purification	The antibody was purified by immunogen affinity chromatography.
Molecular Weight	Predicted: 54; Observed: 75 kD
Form/Buffer	Liquid in 0.42% Potassium phosphate, 0.87% Sodium chloride, pH 7.3, 30% glycerol, and 0.01% sodium azide.
Alternative Names	Dymeclin; Dyggve-Melchior-Clausen syndrome protein
Gene Symbol	DYM
Entrez Gene	54808(Human); 69190(Mouse)
SwissProt	Q7RTS9(Human); Q8CHY3(Mouse); B4F766(Rat)

\*AREX continuously optimizes our products. Webpage content may not reflect the latest updates. For inquiries, please contact [info@arexbio.com](mailto:info@arexbio.com) or your local distributor.

\*Clone Number, Reactivity, Source/Host and Clonality can be found in the product name and Key Features section above.

**DATASHEET****Dymeclin Rabbit Polyclonal Antibody**

CAT. NO. APA15501

**DATA**

Western blot analysis of Dymeclin expression in HepG2 (A) whole cell lysates. (Predicted band size: 54; 75 kD; Observed band size: 75 kD)

**STORAGE**

Store at 4°C short term. For long term storage, store at -20°C, avoiding freeze/thaw cycles.

**NOTE**

For Research Use Only. Not for diagnostic, therapeutics, prophylactic or in vivo use.