

DATASHEET

DNLC2A Rabbit Polyclonal Antibody

CAT. NO. APA15503

KEY FEATURES

Target	DNLC2A	Source / Host	Rabbit
Reactivity	Human, Mouse, Rat	Clonality	Polyclonal
Applications	WB, IHC	Conjugation	Unconjugated
Form / Buffer	Liquid in 0.42% Potassium phosphate, 0.87% Sodium chloride, pH 7.3, 30% glycerol, and 0.01% sodium azide.		Storage at-20°C

BACKGROUND

Component of dynein, a family of motor proteins essential for movement along microtubules . Required for structural and functional integrity of cilia . Acts as one of several non-catalytic accessory components of the cytoplasmic dynein 1 complex that are thought to be involved in linking dynein to cargos and to adapter proteins that regulate dynein function (Probable). Cytoplasmic dynein 1 acts as a motor for the intracellular retrograde motility of vesicles and organelles along microtubules (Probable).

APPLICATION

To ensure optimal assay performance, AREX recommends conducting reagent titration tailored to each testing system for optimal detection results.

WB	1:500 - 1:2000
IHC	1:50 - 1:200

*Results are sample-specific. Please refer to your local assay conditions and test parameters for reference.

PRODUCT OVERVIEW

Description	Rabbit polyclonal antibody to DNLC2A
Specificity	Recognizes endogenous levels of DNLC2A protein
Antibody Type	Primary antibody
Immunogen	KLH-conjugated synthetic peptide of human DNLC2A. The exact sequence is proprietary.
Purification	The antibody was purified by immunogen affinity chromatography.
Molecular Weight	Predicted: 5; Observed: 11 kD
Form/Buffer	Liquid in 0.42% Potassium phosphate, 0.87% Sodium chloride, pH 7.3, 30% glycerol, and 0.01% sodium azide.
Alternative Names	BITH; DNCL2A; DNLC2A; ROBLD1; Dynein light chain roadblock-type 1; Bithoraxoid-like protein; BLP; Dynein light chain 2A cytoplasmic; Dynein-associated protein Km23; Roadblock domain-containing protein 1
Gene Symbol	DYNLRB1
Entrez Gene	83658(Human); 67068(Mouse); 170714(Rat)
SwissProt	Q9NP97(Human); P62627(Mouse); P62628(Rat)

*AREX continuously optimizes our products. Webpage content may not reflect the latest updates. For inquiries, please contact info@arexbio.com or your local distributor.

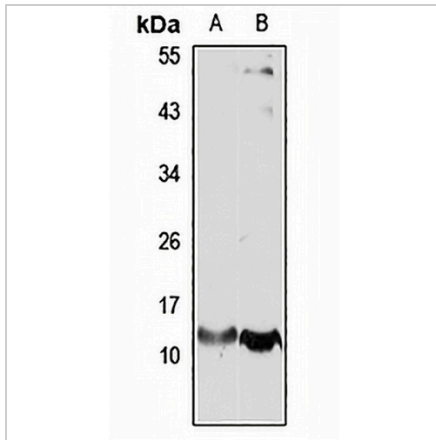
*Clone Number, Reactivity, Source/Host and Clonality can be found in the product name and Key Features section above.

DATASHEET

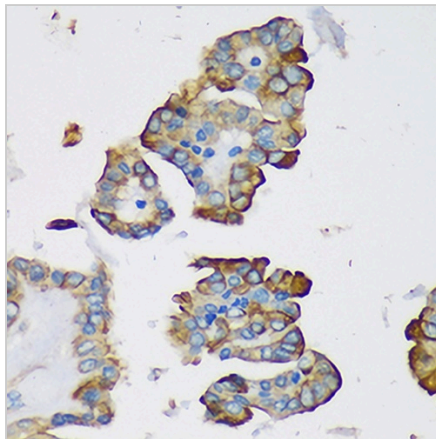
DNLC2A Rabbit Polyclonal Antibody

CAT. NO. APA15503

DATA



Western blot analysis of DNLC2A expression in HEK293T (A), mouse brain (B) whole cell lysates. (Predicted band size: 5; 10 kD; Observed band size: 11 kD)



Immunohistochemical analysis of DNLC2A staining in human thyroid cancer formalin fixed paraffin embedded tissue section. The section was pre-treated using heat mediated antigen retrieval with sodium citrate buffer (pH 6.0). The section was then incubated with the antibody at room temperature and detected using an HRP conjugated compact polymer system. DAB was used as the chromogen. The section was then counterstained with haematoxylin and mounted with DPX.

STORAGE

Store at 4°C short term. For long term storage, store at -20°C, avoiding freeze/thaw cycles.

NOTE

For Research Use Only. Not for diagnostic, therapeutics, prophylactic or in vivo use.