

DATASHEET

TCTEX-1 Rabbit Polyclonal Antibody

CAT. NO. APA15504

KEY FEATURES

Target	TCTEX-1	Source / Host	Rabbit
Reactivity	Human, Mouse	Clonality	Polyclonal
Applications	WB	Conjugation	Unconjugated
Form / Buffer	Liquid in 0.42% Potassium phosphate, 0.87% Sodium chloride, pH 7.3, 30% glycerol, and 0.01% sodium azide.		Storage at-20°C

BACKGROUND

Component of dynein, a family of motor proteins essential for movement along microtubules . Required for structural and functional integrity of cilia . Acts as one of several non-catalytic accessory components of the cytoplasmic dynein 1 complex that are thought to be involved in linking dynein to cargos and to adapter proteins that regulate dynein function. Cytoplasmic dynein 1 acts as a motor for the intracellular retrograde motility of vesicles and organelles along microtubules. Binds to transport cargos and is involved in apical cargo transport such as rhodopsin-bearing vesicles in polarized epithelia.

APPLICATION

To ensure optimal assay performance, AREX recommends conducting reagent titration tailored to each testing system for optimal detection results.

WB	1:500 - 1:2000
----	----------------

*Results are sample-specific. Please refer to your local assay conditions and test parameters for reference.

PRODUCT OVERVIEW

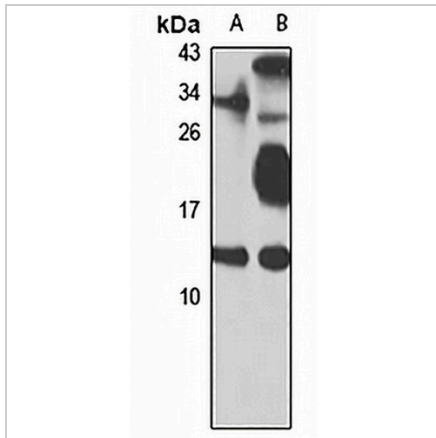
Description	Rabbit polyclonal antibody to TCTEX-1
Specificity	Recognizes endogenous levels of TCTEX-1 protein
Antibody Type	Primary antibody
Immunogen	Recombinant fusion protein of human TCTEX-1. The exact sequence is proprietary.
Purification	The antibody was purified by immunogen affinity chromatography.
Molecular Weight	Predicted: 12 kD; Observed: 13 kD
Form/Buffer	Liquid in 0.42% Potassium phosphate, 0.87% Sodium chloride, pH 7.3, 30% glycerol, and 0.01% sodium azide.
Alternative Names	TCTEL1; TCTEX-1; TCTEX1; Dynein light chain Tctex-type 1; Protein CW-1; T-complex testis-specific protein 1 homolog
Gene Symbol	DYNLT1
Entrez Gene	6993(Human); 100040531; 100040563; 100310872; 21648(Mouse)
SwissProt	P63172(Human); P51807(Mouse)

*AREX continuously optimizes our products. Webpage content may not reflect the latest updates. For inquiries, please contact info@arexbio.com or your local distributor.

*Clone Number, Reactivity, Source/Host and Clonality can be found in the product name and Key Features section above.

DATASHEET**TCTEX-1 Rabbit Polyclonal Antibody**

CAT. NO. APA15504

DATA**STORAGE**

Store at 4°C short term. For long term storage, store at -20°C, avoiding freeze/thaw cycles.

NOTE

For Research Use Only. Not for diagnostic, therapeutics, prophylactic or in vivo use.