

DATASHEET

ECE2 Rabbit Polyclonal Antibody

CAT. NO. APA15513

KEY FEATURES

Target	ECE2	Source / Host	Rabbit
Reactivity	Human	Clonality	Polyclonal
Applications	WB	Conjugation	Unconjugated
Form / Buffer	Liquid in 0.42% Potassium phosphate, 0.87% Sodium chloride, pH 7.3, 30% glycerol, and 0.01% sodium azide.		Storage at -20°C

BACKGROUND

Protein-lysine methyltransferase that efficiently catalyzes three successive methylations on 'Lys-36' in eukaryotic translation elongation factor 1 alpha (EEF1A1 or EEF1A2).

APPLICATION

To ensure optimal assay performance, AREX recommends conducting reagent titration tailored to each testing system for optimal detection results.

WB	1:500 - 1:2000
----	----------------

*Results are sample-specific. Please refer to your local assay conditions and test parameters for reference.

PRODUCT OVERVIEW

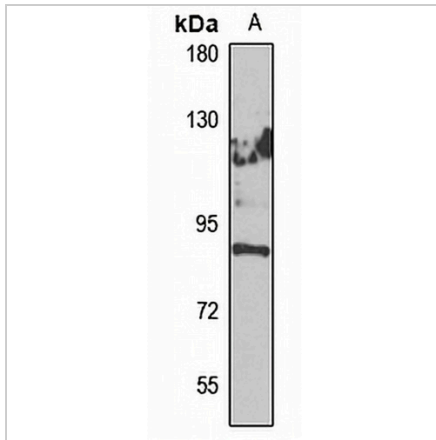
Description	Rabbit polyclonal antibody to ECE2
Specificity	Recognizes endogenous levels of ECE2 protein
Antibody Type	Primary antibody
Immunogen	Recombinant fusion protein of human ECE2. The exact sequence is proprietary.
Purification	The antibody was purified by immunogen affinity chromatography.
Molecular Weight	Predicted: 28; Observed: 90 kD
Form/Buffer	Liquid in 0.42% Potassium phosphate, 0.87% Sodium chloride, pH 7.3, 30% glycerol, and 0.01% sodium azide.
Alternative Names	KIAA0604; Endothelin-converting enzyme 2; ECE-2
Gene Symbol	ECE2
Entrez Gene	9718(Human)
SwissProt	O60344(Human)

*AREX continuously optimizes our products. Webpage content may not reflect the latest updates. For inquiries, please contact info@arexbio.com or your local distributor.

*Clone Number, Reactivity, Source/Host and Clonality can be found in the product name and Key Features section above.

DATASHEET**ECE2 Rabbit Polyclonal Antibody**

CAT. NO. APA15513

DATA

Western blot analysis of ECE2 expression in HepG2 (A) whole cell lysates. (Predicted band size: 28; 83; 86; 91; 99 kD; Observed band size: 90 kD)

STORAGE

Store at 4°C short term. For long term storage, store at -20°C, avoiding freeze/thaw cycles.

NOTE

For Research Use Only. Not for diagnostic, therapeutics, prophylactic or in vivo use.