

DATASHEET

EDARADD Rabbit Polyclonal Antibody

CAT. NO. APA15516

KEY FEATURES

Target	EDARADD	Source / Host	Rabbit
Reactivity	Human	Clonality	Polyclonal
Applications	WB	Conjugation	Unconjugated
Form / Buffer	Liquid in 0.42% Potassium phosphate, 0.87% Sodium chloride, pH 7.3, 30% glycerol, and 0.01% sodium azide.		Storage at-20°C

BACKGROUND

Adapter protein that interacts with EDAR DEATH domain and couples the receptor to EDA signaling pathway during morphogenesis of ectodermal organs. Mediates the activation of NF-kappa-B.

APPLICATION

To ensure optimal assay performance, AREX recommends conducting reagent titration tailored to each testing system for optimal detection results.

WB	1:500 - 1:2000
----	----------------

*Results are sample-specific. Please refer to your local assay conditions and test parameters for reference.

PRODUCT OVERVIEW

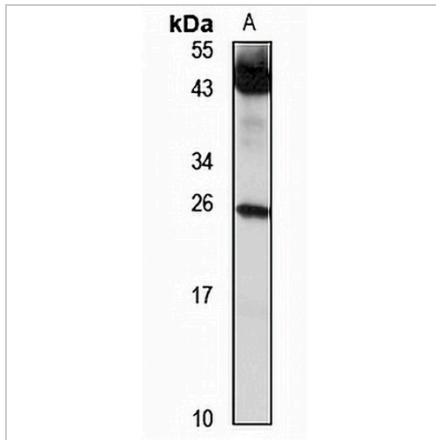
Description	Rabbit polyclonal antibody to EDARADD
Specificity	Recognizes endogenous levels of EDARADD protein
Antibody Type	Primary antibody
Immunogen	Recombinant fusion protein of human EDARADD. The exact sequence is proprietary.
Purification	The antibody was purified by immunogen affinity chromatography.
Molecular Weight	Predicted: 24 kD; Observed: 25 kD
Form/Buffer	Liquid in 0.42% Potassium phosphate, 0.87% Sodium chloride, pH 7.3, 30% glycerol, and 0.01% sodium azide.
Alternative Names	Ectodysplasin-A receptor-associated adapter protein; EDAR-associated death domain protein; Protein crinkled homolog
Gene Symbol	EDARADD
Entrez Gene	128178(Human)
SwissProt	Q8WWZ3(Human)

*AREX continuously optimizes our products. Webpage content may not reflect the latest updates. For inquiries, please contact info@arexbio.com or your local distributor.

*Clone Number, Reactivity, Source/Host and Clonality can be found in the product name and Key Features section above.

DATASHEET**EDARADD Rabbit Polyclonal Antibody**

CAT. NO. APA15516

DATA

Western blot analysis of EDARADD expression in MCF7 (A) whole cell lysates. (Predicted band size: 24 kD; Observed band size: 25 kD)

STORAGE

Store at 4°C short term. For long term storage, store at -20°C, avoiding freeze/thaw cycles.

NOTE

For Research Use Only. Not for diagnostic, therapeutics, prophylactic or in vivo use.