

DATASHEET

ET-3 Rabbit Polyclonal Antibody

CAT. NO. APA15519

KEY FEATURES

Target	ET-3	Source / Host	Rabbit
Reactivity	Human	Clonality	Polyclonal
Applications	WB	Conjugation	Unconjugated
Form / Buffer	Liquid in 0.42% Potassium phosphate, 0.87% Sodium chloride, pH 7.3, 30% glycerol, and 0.01% sodium azide.		Storage at -20°C

BACKGROUND

Endothelins are endothelium-derived vasoconstrictor peptides.

APPLICATION

To ensure optimal assay performance, AREX recommends conducting reagent titration tailored to each testing system for optimal detection results.

WB	1:500 - 1:2000
----	----------------

*Results are sample-specific. Please refer to your local assay conditions and test parameters for reference.

PRODUCT OVERVIEW

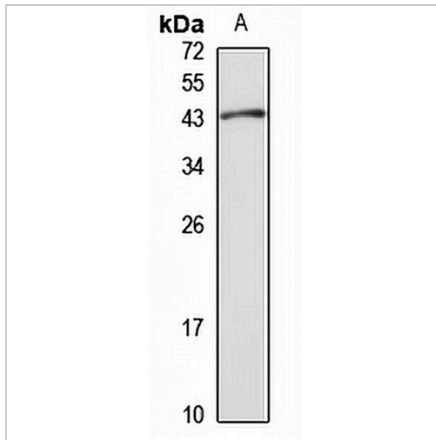
Description	Rabbit polyclonal antibody to ET-3
Specificity	Recognizes endogenous levels of ET-3 protein
Antibody Type	Primary antibody
Immunogen	Recombinant fusion protein of human ET-3. The exact sequence is proprietary.
Purification	The antibody was purified by immunogen affinity chromatography.
Molecular Weight	Predicted: 23; Observed: 44 kD
Form/Buffer	Liquid in 0.42% Potassium phosphate, 0.87% Sodium chloride, pH 7.3, 30% glycerol, and 0.01% sodium azide.
Alternative Names	Endothelin-3; ET-3; Preproendothelin-3; PPET3
Gene Symbol	EDN3
Entrez Gene	1908(Human)
SwissProt	P14138(Human)

*AREX continuously optimizes our products. Webpage content may not reflect the latest updates. For inquiries, please contact info@arexbio.com or your local distributor.

*Clone Number, Reactivity, Source/Host and Clonality can be found in the product name and Key Features section above.

DATASHEET**ET-3 Rabbit Polyclonal Antibody**

CAT. NO. APA15519

DATA

Western blot analysis of ET-3 expression in A549 (A) whole cell lysates. (Predicted band size: 23; 25 kD; Observed band size: 44 kD)

STORAGE

Store at 4°C short term. For long term storage, store at -20°C, avoiding freeze/thaw cycles.

NOTE

For Research Use Only. Not for diagnostic, therapeutics, prophylactic or in vivo use.