

DATASHEET

SELB Rabbit Polyclonal Antibody

CAT. NO. APA15522

KEY FEATURES

Target	SELB	Source / Host	Rabbit
Reactivity	Human, Mouse	Clonality	Polyclonal
Applications	WB	Conjugation	Unconjugated
Form / Buffer	Liquid in 0.42% Potassium phosphate, 0.87% Sodium chloride, pH 7.3, 30% glycerol, and 0.01% sodium azide.		Storage at-20°C

BACKGROUND

Translation factor required for the incorporation of the rare amino acid selenocysteine encoded by UGA codons . Replaces the eRF1-eRF3-GTP ternary complex for the insertion of selenocysteine directed by the UGA codon . Insertion of selenocysteine at UGA codons is mediated by SECISBP2 and EEFSEC: SECISBP2 (1) specifically binds the SECIS sequence once the 80S ribosome encounters an in-frame UGA codon and (2) contacts the RPS27A/eS31 of the 40S ribosome before ribosome stalling . (3) GTP-bound EEFSEC then delivers selenocysteinyl-tRNA(Sec) to the 80S ribosome and adopts a preaccommodated state conformation . (4) After GTP hydrolysis, EEFSEC dissociates from the assembly, selenocysteinyl-tRNA(Sec) accommodates, and peptide bond synthesis and selenoprotein elongation occur .

APPLICATION

To ensure optimal assay performance, AREX recommends conducting reagent titration tailored to each testing system for optimal detection results.

WB	1:500 - 1:2000
----	----------------

*Results are sample-specific. Please refer to your local assay conditions and test parameters for reference.

PRODUCT OVERVIEW

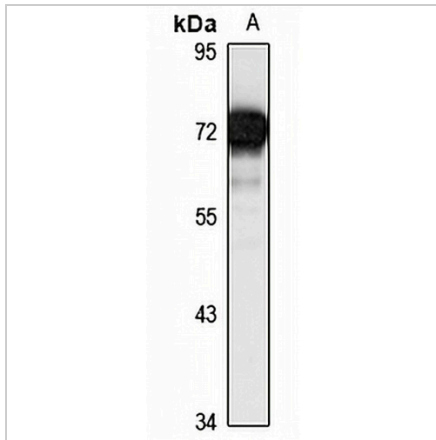
Description	Rabbit polyclonal antibody to SELB
Specificity	Recognizes endogenous levels of SELB protein
Antibody Type	Primary antibody
Immunogen	Recombinant fusion protein of human SELB. The exact sequence is proprietary.
Purification	The antibody was purified by immunogen affinity chromatography.
Molecular Weight	Predicted: 65 kD; Observed: 72 kD
Form/Buffer	Liquid in 0.42% Potassium phosphate, 0.87% Sodium chloride, pH 7.3, 30% glycerol, and 0.01% sodium azide.
Alternative Names	SELB; Selenocysteine-specific elongation factor; Elongation factor sec; Eukaryotic elongation factor selenocysteine-tRNA-specific
Gene Symbol	EEFSEC
Entrez Gene	60678(Human); 65967(Mouse)
SwissProt	P57772(Human); Q9JHW4(Mouse)

*AREX continuously optimizes our products. Webpage content may not reflect the latest updates. For inquiries, please contact info@arexbio.com or your local distributor.

*Clone Number, Reactivity, Source/Host and Clonality can be found in the product name and Key Features section above.

DATASHEET**SELB Rabbit Polyclonal Antibody**

CAT. NO. APA15522

DATA

Western blot analysis of SELB expression in HepG2 (A) whole cell lysates. (Predicted band size: 65 kD; Observed band size: 72 kD)

STORAGE

Store at 4°C short term. For long term storage, store at -20°C, avoiding freeze/thaw cycles.

NOTE

For Research Use Only. Not for diagnostic, therapeutics, prophylactic or in vivo use.