

DATASHEET

EHBP1 Rabbit Polyclonal Antibody

CAT. NO. APA15527

KEY FEATURES

| | | | |
|---------------|---|---------------|---------------------|
| Target | EHBP1 | Source / Host | Rabbit |
| Reactivity | Human, Mouse, Rat | Clonality | Polyclonal |
| Applications | WB | Conjugation | Unconjugated |
| Form / Buffer | Liquid in 0.42% Potassium phosphate, 0.87% Sodium chloride, pH 7.3, 30% glycerol, and 0.01% sodium azide. | | Storage at -20°C |

BACKGROUND

May play a role in actin reorganization. Links clathrin-mediated endocytosis to the actin cytoskeleton. May act as Rab effector protein and play a role in vesicle trafficking . Required for perinuclear sorting and insulin-regulated recycling of SLC2A4/GLUT4 in adipocytes .

APPLICATION

To ensure optimal assay performance, AREX recommends conducting reagent titration tailored to each testing system for optimal detection results.

| | |
|----|----------------|
| WB | 1:500 - 1:2000 |
|----|----------------|

*Results are sample-specific. Please refer to your local assay conditions and test parameters for reference.

PRODUCT OVERVIEW

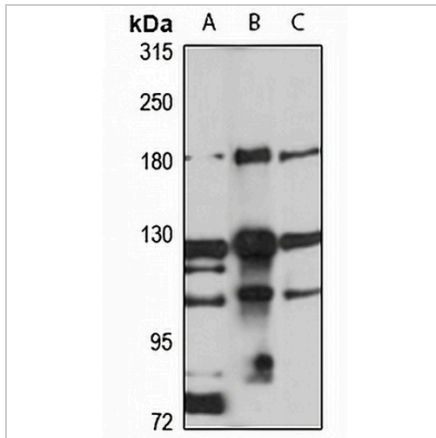
| | |
|-------------------|---|
| Description | Rabbit polyclonal antibody to EHBP1 |
| Specificity | Recognizes endogenous levels of EHBP1 protein |
| Antibody Type | Primary antibody |
| Immunogen | Recombinant fusion protein of human EHBP1. The exact sequence is proprietary. |
| Purification | The antibody was purified by immunogen affinity chromatography. |
| Molecular Weight | Predicted: 132; Observed: 180 kD |
| Form/Buffer | Liquid in 0.42% Potassium phosphate, 0.87% Sodium chloride, pH 7.3, 30% glycerol, and 0.01% sodium azide. |
| Alternative Names | KIAA0903; NACSIN; EH domain-binding protein 1 |
| Gene Symbol | EHBP1 |
| Entrez Gene | 23301(Human); 216565(Mouse) |
| SwissProt | Q8NDI1(Human); Q69ZW3(Mouse) |

*AREX continuously optimizes our products. Webpage content may not reflect the latest updates. For inquiries, please contact info@arexbio.com or your local distributor.

*Clone Number, Reactivity, Source/Host and Clonality can be found in the product name and Key Features section above.

DATASHEET**EHBP1 Rabbit Polyclonal Antibody**

CAT. NO. APA15527

DATA

Western blot analysis of EHBP1 expression in Jurkat (A), mouse brain (B), rat brain (C) whole cell lysates. (Predicted band size: 132; 136; 140 kD; Observed band size: 180 kD)

STORAGE

Store at 4°C short term. For long term storage, store at -20°C, avoiding freeze/thaw cycles.

NOTE

For Research Use Only. Not for diagnostic, therapeutics, prophylactic or in vivo use.