

DATASHEET

EHD2 Rabbit Polyclonal Antibody

CAT. NO. APA15528

KEY FEATURES

Target	EHD2	Source / Host	Rabbit
Reactivity	Human, Mouse, Rat	Clonality	Polyclonal
Applications	WB	Conjugation	Unconjugated
Form / Buffer	Liquid in 0.42% Potassium phosphate, 0.87% Sodium chloride, pH 7.3, 30% glycerol, and 0.01% sodium azide.		Storage at -20°C

BACKGROUND

ATP- and membrane-binding protein that controls membrane reorganization/tubulation upon ATP hydrolysis . Plays a role in membrane trafficking between the plasma membrane and endosomes . Important for the internalization of GLUT4. Required for fusion of myoblasts to skeletal muscle myotubes. Required for normal translocation of FER1L5 to the plasma membrane . Regulates the equilibrium between cell surface-associated and cell surface-dissociated caveolae by constraining caveolae at the cell membrane .

APPLICATION

To ensure optimal assay performance, AREX recommends conducting reagent titration tailored to each testing system for optimal detection results.

WB	1:500 - 1:2000
----	----------------

*Results are sample-specific. Please refer to your local assay conditions and test parameters for reference.

PRODUCT OVERVIEW

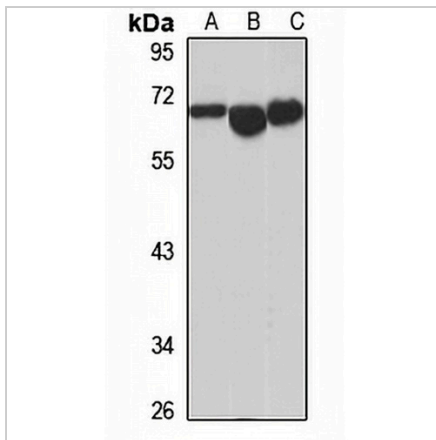
Description	Rabbit polyclonal antibody to EHD2
Specificity	Recognizes endogenous levels of EHD2 protein
Antibody Type	Primary antibody
Immunogen	Recombinant fusion protein of human EHD2. The exact sequence is proprietary.
Purification	The antibody was purified by immunogen affinity chromatography.
Molecular Weight	Predicted: 46; Observed: 61 kD
Form/Buffer	Liquid in 0.42% Potassium phosphate, 0.87% Sodium chloride, pH 7.3, 30% glycerol, and 0.01% sodium azide.
Alternative Names	PAST2; EH domain-containing protein 2; PAST homolog 2
Gene Symbol	EHD2
Entrez Gene	30846(Human); 259300(Mouse); 361512(Rat)
SwissProt	Q9NZN4(Human); Q8BH64(Mouse); Q4V8H8(Rat)

*AREX continuously optimizes our products. Webpage content may not reflect the latest updates. For inquiries, please contact info@arexbio.com or your local distributor.

*Clone Number, Reactivity, Source/Host and Clonality can be found in the product name and Key Features section above.

DATASHEET**EHD2 Rabbit Polyclonal Antibody**

CAT. NO. APA15528

DATA

Western blot analysis of EHD2 expression in A549 (A), mouse lung (B), rat lung (C) whole cell lysates. (Predicted band size: 46; 61 kD; Observed band size: 61 kD)

STORAGE

Store at 4°C short term. For long term storage, store at -20°C, avoiding freeze/thaw cycles.

NOTE

For Research Use Only. Not for diagnostic, therapeutics, prophylactic or in vivo use.